

Installation guide

For v15 of:

Nuance®

Dragon® Professional

Individual

Nuance®

Dragon® Legal

Individual

Contents

Dragon Individual Installation Guide	1
Contents	3
Copyright	5
Chapter 1: About this guide	7
Guide overview	8
Audience	8
About Dragon Professional Individual	9
Additional resources	10
Documentation	10
Training	10
Support	10
Chapter 2: Preparing to install Dragon	11
Checklist—Planning the client installation	12
Preparing for an installation	13
Storage space considerations	14
Dragon system requirements	15
Dragon file structure	16
Windows 7, Windows 8.1, and Windows 10	16
Accessing program files	17
Chapter 3: Initial Installation of Dragon Professional Individual	19
Install Dragon and choose the default settings	20
Installing Dragon on a single computer	20
Chapter 4: Installing the Dragon client with settings	25
Overview—Installing the Dragon client with initial settings	26
Prerequisites	26
Installation methods	26
Push installations	26
Installing the same Dragon configuration on multiple computers	28
Performing an administrative installation with a batch file	29
Understanding the script in admininstall.bat	29
Modifying admininstall.bat	29
Command Line installation with msiexec.exe	30
Installing the same configuration on additional computer(s)	30
Appendix A: Modifying nsdefaults.ini	31

Dragon client settings in nsdefaults.ini	32
Auto-Formatting dialog box	32
Options dialog	36
Administrative Settings dialog	50
Appendix B: Options for MSI installations	53
MSI properties for Dragon installations	54
Sample command lines	55
Feature variables to set through the ADDLOCAL or ADVERTISE properties	56
Speech options	57
MSI options for scheduled tasks	58
Extracting MSI/MST files from the Dragon setup.exe	59

Copyright

Dragon Professional Individual.

2017 Nuance Communications, Inc.

This material may not include some last-minute technical changes and/or revisions to the software. Changes are periodically made to the information provided here. Future versions of this material will incorporate these changes.

No part of this manual or software may be reproduced in any form or by any means, including, without limitation, electronic or mechanical, such as photocopying or recording, or by any information storage and retrieval systems, without the express written consent of Nuance Communications, Inc. Specifications are subject to change without notice.

Copyright © 2017 Nuance Communications, Inc. All rights reserved.

Nuance, ScanSoft, the Nuance logo, the Dragon logo, Dragon, DragonBar, NaturallySpeaking, NaturallyMobile, RealSpeak, Nothing But Speech (NBS), Natural Language Technology, Select-and-Say, MouseGrid, and Vocabulary Editor are registered trademarks or trademarks of Nuance Communications, Inc. in the United States or other countries. All other names and trademarks referenced herein are trademarks of Nuance Communications or their respective owners. Designations used by third-party manufacturers and sellers to distinguish their products may be claimed as trademarks by those third-parties.

Adobe and Acrobat are registered trademarks of Adobe Systems Incorporated. AMD is a trademark of Advanced Micro Devices, Inc. America Online is a registered trademark of America Online, Inc., a division of AOL Time Warner. Corel and WordPerfect are registered trademarks of Corel Corporation. iPAQ is a registered trademark of the Hewlett-Packard Company. Lotus and Lotus Notes are registered trademarks of Lotus Development Corporation. Macromedia Flash is a trademark of Macromedia, Inc. Microsoft, Outlook, Windows, Windows NT, Visual Basic, and PowerPoint are trademarks or registered trademarks of Microsoft Corporation. Mozilla, Mozilla Firefox, and Mozilla Thunderbird are trademarks or registered trademarks of the Mozilla Foundation. Palm OS is a registered trademark of PalmSource, Inc. or its affiliates. Panasonic is a registered trademark of the Matsushita Electric Industrial Co., Ltd. Pentium is a registered trademark of Intel Corporation. Sony and Memory Stick are registered trademarks of the Sony Corporation. Voice It, the Voice It logo, and Voice It Link are trademarks or registered trademarks of VXI Corporation.

Disclaimer

Nuance makes no warranty, express or implied, with respect to the quality, reliability, currency, accuracy, or freedom from error of this document or the product or products referred to herein and specifically disclaims any implied warranties, including, without limitation, any implied warranty of merchantability, fitness for any particular purpose, or non-infringement.

Nuance disclaims all liability for any direct, indirect, incidental, consequential, special, or exemplary damages resulting from the use of the information in this document. Mention of any product not manufactured by Nuance does not constitute an endorsement by Nuance of that product.

Notice

Nuance Communications, Inc. is strongly committed to creating high quality voice and data management products that, when used in conjunction with your own company's security policies and practices, deliver an efficient and secure means of managing confidential information.

Nuance believes that data security is best maintained by limiting access to various types of information to authorized users only. Although no software product can completely guarantee against security failure, Dragon software contains configurable password features that, when used properly, provide a high degree of protection.

We strongly urge current owners of Nuance products that include optional system password features to verify that these features are enabled! You can call our support line if you need assistance in setting up passwords correctly or in verifying your existing security settings.

Published by Nuance Communications, Inc., Burlington, Massachusetts, USA
Visit us on the Web at www.nuance.com. Links to our international web sites are shown there.
3/23/2017

Chapter 1: About this guide

Guide overview	8
About Dragon Professional Individual	9
Additional resources	10

Guide overview

The *Dragon Installation Guide* provides information on installing and configuring the Dragon client on one or more computers. The guide is available in PDF format from the Nuance Support web site.

Audience

This guide is intended for IT administrators and Dragon administrators whose responsibility is to install and configure Dragon clients on one or more computers.

This guide assumes you have experience in software installation and using Command Line options.

About Dragon Professional Individual

Dragon Professional Individual allows users to create reports, spreadsheets, presentations and other documentation more efficiently with fast, accurate dictation and transcription. Dragon Professional Individual also includes voice commands that allow users to perform everyday tasks without using the mouse or keyboard. For example, use voice commands to:

- Correct and format text
- Access buttons and menus in supported programs, including Microsoft Word, Corel WordPerfect, WordPad, and more
- Launch any application in the Start menu or desktop

Administrators or users can also create customized voice commands and vocabulary terms and share them with team members.

Dragon Professional Individual can be installed on each client computer manually (see [“Install Dragon and choose the default settings” on page 20](#)) or through a push install (see [“Push installations” on page 26](#)).

Additional resources

The following resources are available in addition to this guide to help you manage your Dragon installation.

Documentation

Document	Description	Location
Dragon Help	Full online Help system that includes commands and instructions for dictating, correcting, and more with Dragon.	When Dragon is open, select Help>Help Topics from the DragonBar.
<i>Dragon Release Notes</i>	New features, system requirements, client upgrade instructions, and known issues.	Dragon Help: http://www.nuance.com/products/help/dragon15/dragon-for-pc/enx/professionalgroup/Content/ReleaseNotes/DG_relnotes.htm
<i>Dragon Wireless Headset User Guide</i>	Instructions for connecting and using your Bluetooth headset with Dragon.	Dragon Support web site: http://www.nuance.com/ucmprod/groups/corporate/@web-enus/documents/collateral/dragon_wireless_headset.pdf
<i>Dragon Workbook</i>	Instructions and training exercises for performing Dragon's basic tasks, like dictating and correcting text by voice.	Dragon Support web site: http://www.nuance.com/ucmprod/groups/dragon/@web-enus/documents/collateral/dragon_pro15_workbook.pdf

Training

Nuance provides several Dragon training offerings, like webinars, demos, and Nuance University online training courses. For more information, see the Dragon Support web site.

Support

The Dragon Support web site provides many resources to assist you with your Dragon installation, like forums and a searchable knowledgebase. For more information on Support offerings, see the Dragon Support web site at:

<http://www.nuance.com/support/dragon-naturallyspeaking/index.htm>

Chapter 2: Preparing to install Dragon

- Checklist—Planning the client installation** 12
- Preparing for an installation** 13
 - Storage space considerations 14
- Dragon system requirements** 15
- Dragon file structure** 16
 - Windows 7, Windows 8.1, and Windows 10 16
 - Accessing program files 17

Checklist—Planning the client installation

Use this checklist to help you prepare for client installations.

	Task	Reference
<input type="checkbox"/>	Perform an initial installation of the Dragon client.	“Installing Dragon on a single computer” on page 20
<input type="checkbox"/>	Set up the configuration files as needed, then copy them to a directory you can access from other computers.	“Natspeak.exe Command Line Options” on page 1
<input type="checkbox"/>	Install the Dragon client on users’ machines using one of the following methods: <ul style="list-style-type: none"> • Manual install from a DVD. • Push install with an MSI. 	<ul style="list-style-type: none"> • “Installing the same Dragon configuration on multiple computers” on page 28 • “Command Line installation with msixec.exe” on page 30

Preparing for an installation

Before installing, modifying, or upgrading Dragon Professional Individual:

- Install any pending Windows updates, and then restart the computer.
- Turn off or disable any antivirus software until installation is complete. Installation can sometimes trigger a false virus report.
- Close all open applications.
- Read [“Checklist—Planning the client installation” on page 12.](#)
- Be sure your system meets the requirements before attempting to install Dragon Professional Individual.

For more information, see [“Dragon system requirements” on page 15.](#)

For upgrade instructions, see the Dragon client Help at:

http://www.nuance.com/products/help/dragon15/dragon-for-pc/enx/-professionalgroup/Content/ReleaseNotes/DG_relnotes.htm#UpgradedInstructions

Installation considerations

- Administrator rights are not required to create a user profile or use the software after installation. Note that if an administrator creates a user profile while logged in as an administrator, that profile will not be accessible to users with restricted privileges.
- Users are permitted to create multiple profiles, so long as each profile is for one person. Additional users must purchase a separate license for Dragon Professional Individual. Volume license agreements are available.

Language considerations

The Dragon setup.exe uses your computer’s operating system language to determine the language in which to display text in the installation wizard. For example, if your operating system is Spanish, the installation wizard user interface appears in Spanish. However, if you choose to install using the .MSI file instead, that file uses the language of your Dragon edition. To override this and allow the .MSI file to use the language of your preference, execute the following from the command line:

```
cd <path where setup.exe and .MSI exist>
msiexec /i "path to .MSI" TRANSFORMS=<path to .MST>
```

For example, to allow the .MSI to use a French user interface:

```
msiexec /i "Dragon 15.msi" TRANSFORMS=1036.mst
```

Use the following table for .MST file names.

Language	File Name
English	1033.mst
German	1031.mst
French	1036.mst
Italian	1040.mst
Spanish	1034.mst

Language	File Name
Dutch	1043.mst

Storage space considerations

Each Dragon user must have his or her own user profile. This is a set of files in which Dragon stores information about each user's voice, frequently-used words and phrases, optional settings, and custom commands (if applicable). Each computer on which Dragon is installed must have enough free space for the required user profile(s).

Dragon system requirements

During the installation process, the software checks that your system meets the following requirements. If they are not met, Dragon Professional Individual is not installed.

RAM	<p>Minimum:</p> <ul style="list-style-type: none"> • 4 GB for all operating systems.
CPU	<p>Minimum: 2.2 GHz Intel® dual core or equivalent AMD processor. Faster processors yield faster performance.</p>
Free hard disk space	<ul style="list-style-type: none"> • 4GB if DVD installation, or • 12GB if downloading installation files
Supported operating systems	<ul style="list-style-type: none"> • Windows 7, 8.1, and 10, 32-bit and 64-bit • Windows Server 2008 R2 • Windows Server 2012
Other	<ul style="list-style-type: none"> • Internet Explorer 11 or the current version of Chrome or Edge for online Help and for installation if installing from the Web • Microsoft .NET Framework version 4.5.2 or later <p>Generally, the .NET Framework is pre-installed on Windows 7, 8.1, and 10 computers. If you do not have it installed, you are prompted to install it during Dragon's installation.</p> <p>Nuance does not provide the .NET Framework with your installation; you must download the installation file from microsoft.com.</p> <ul style="list-style-type: none"> • A DVD-ROM drive if installing from disk • An audio input device capable of 16-bit recording for dictation <p>For a list of recommended devices, see http://support.nuance.com/compatibility/.</p>

Dragon file structure

During installation, Dragon creates the following default folders for application and data file storage.

Note: Upgrading Dragon from an earlier version automatically relocates some directories and files.

Windows 7, Windows 8.1, and Windows 10

Dragon setup log (dgnsetup.log)

C:\ProgramData\Nuance\NaturallySpeaking15\logs

Dragon log

C:\ProgramData\Nuance\NaturallySpeaking15\logs*<Windows_User_Name>*

User Profiles

C:\ProgramData\Nuance\NaturallySpeaking15\Users

Upgrade log

C:\Users*<Windows_User_Name>*\AppData\Roaming\Nuance\NaturallySpeaking15

Vocabularies and Acoustic Models

C:\ProgramData\Nuance\NaturallySpeaking15\Data

Custom words and commands

C:\ProgramData\Nuance\NaturallySpeaking15\custom*<Language>*\

Program files

For 32-bit systems	For 64-bit systems
C:\Program Files\Nuance\NaturallySpeaking15\Program	C:\Program Files (x86)\Nuance\NaturallySpeaking15\Program

Help

For 32-bit systems	For 64-bit systems
C:\Program Files\Nuance\NaturallySpeaking15\Help	C:\Program Files (x86)\Nuance\NaturallySpeaking15\Help

Interactive Tutorial

For 32-bit systems	For 64-bit systems
C:\Program Files\Nuance\NaturallySpeaking15\itutorial	C:\Program Files (x86)\Nuance\NaturallySpeaking15\itutorial

Accessing program files

The Dragon client and many associated utilities can be accessed through the **Start** menu. Their location varies by operating system:

- Windows 7: Select **Start > All Programs > Dragon**.
 - Some utilities are located inside the **Dragon Tools** subfolder.
- Windows 8.1: From the **Start** screen, click the down arrow to show all applications. Scroll to find **Dragon**.
- Windows 10: Select **Start > All apps > Dragon**.

Chapter 3: Initial Installation of Dragon Professional Individual

Install Dragon and choose the default settings	20
Installing Dragon on a single computer	20

Install Dragon and choose the default settings

Install Dragon Professional Individual on the client computer using the downloaded installer file or installation DVD. If you plan to install Dragon on multiple computers, run through an initial installation before attempting to install Dragon from a server. Use the initial client installation to set default values for Administrative and Auto-Formatting options. You can then install Dragon Professional Individual on other computers using the same options.

Notes:

- You must have Windows Administrator rights to install or uninstall Dragon Professional Individual.
- If you have more than one language, the installation process uses your operating system's language, if supported. If Dragon does not support your operating system language, the installer runs in English. You cannot install Dragon using a language other than the primary language. For example, if you install the German software on a French operating system, the installation interface is in French. If you install the German software on a Chinese operating system, the installation interface is in English.

Installing Dragon on a single computer

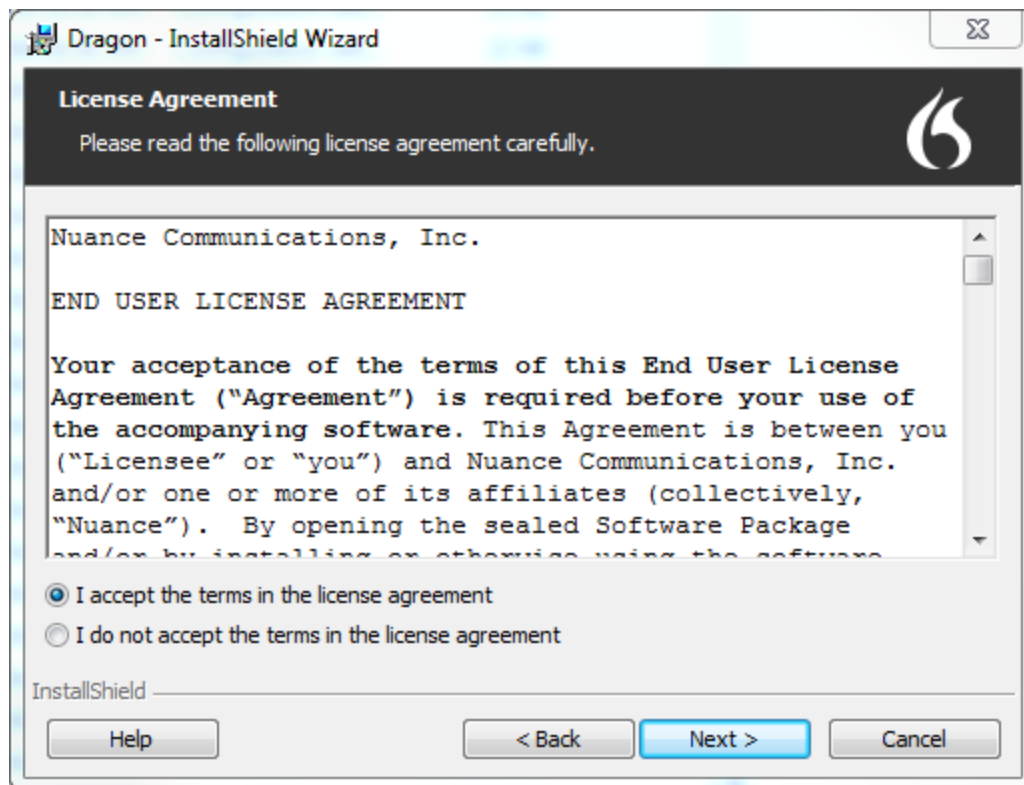
1. Run the Dragon installation file you downloaded.

Or

Insert the product DVD. If the installation does not start automatically, run `setup.exe` from the DVD.

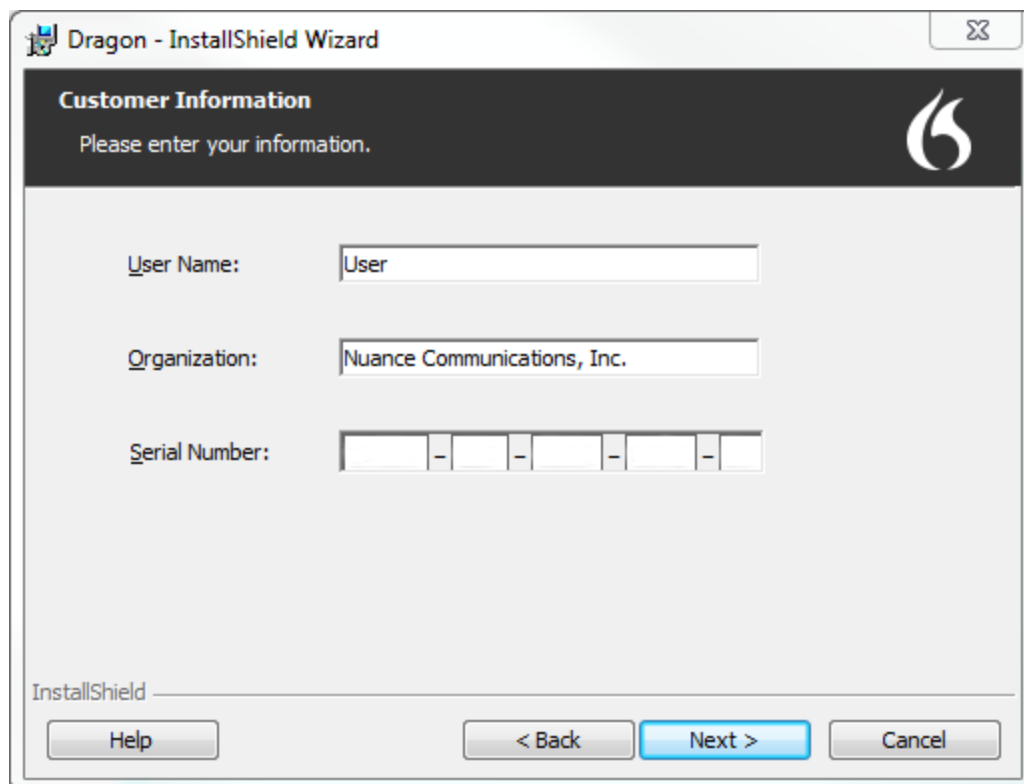
The Dragon InstallShield Wizard opens.

2. Click **Next** to proceed to the **License Agreement** screen.



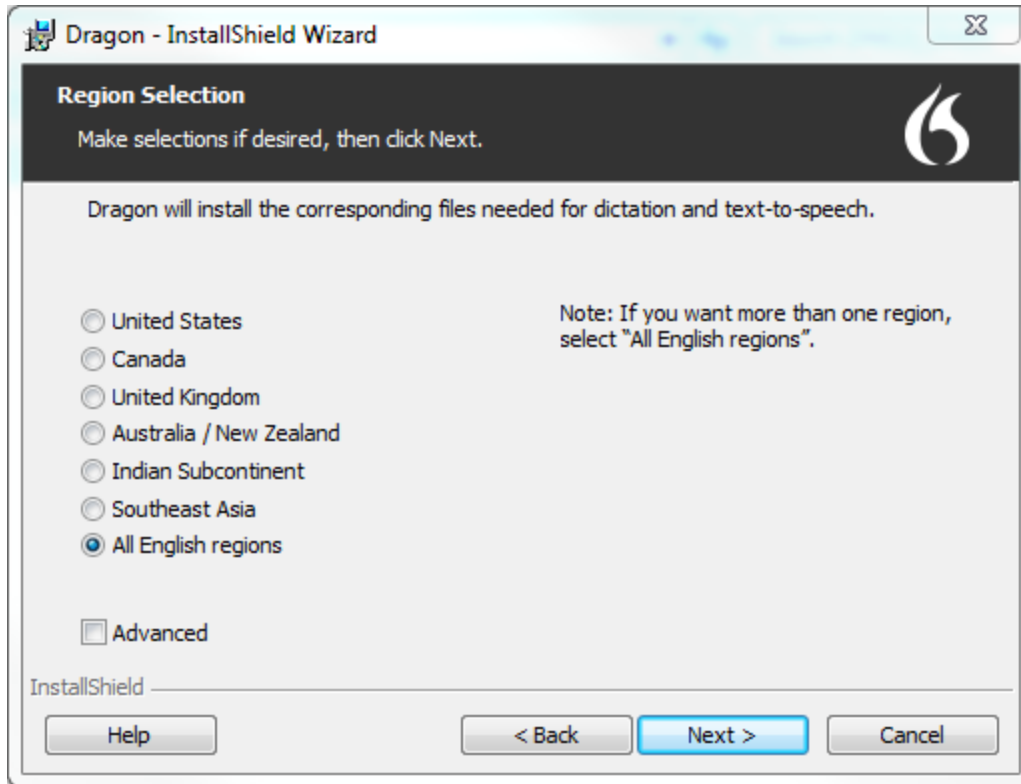
3. Read the text of the agreement, select **I accept...**, and then click **Next**.

The **Customer Information** screen appears.

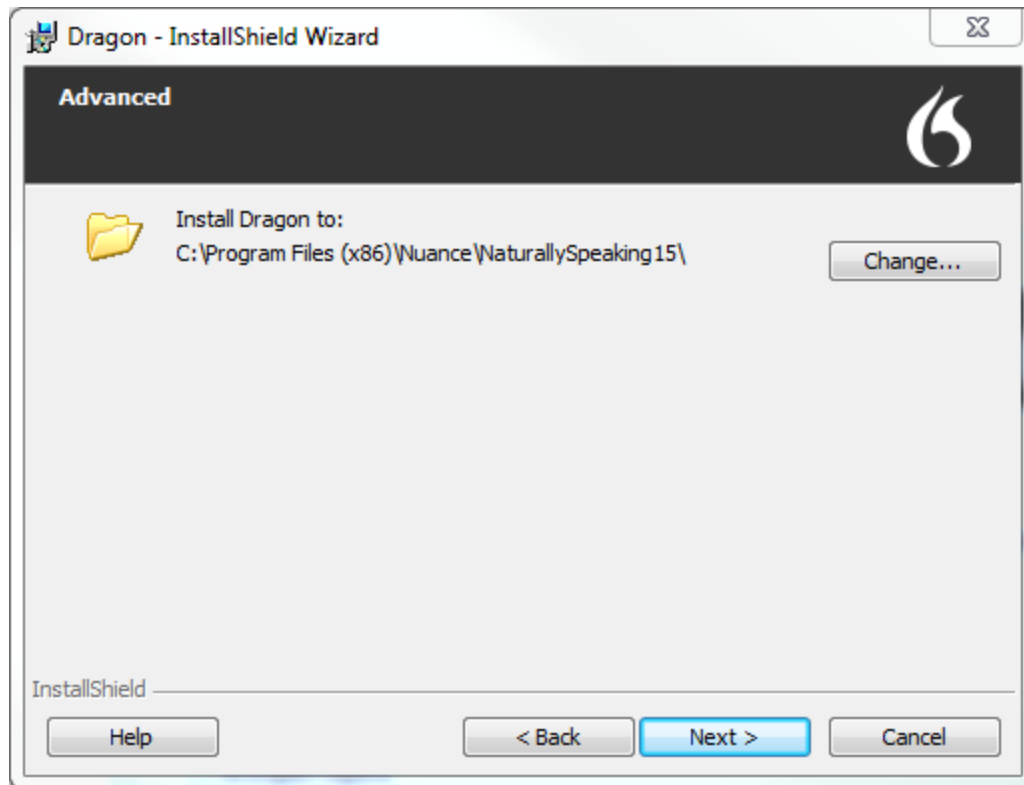


4. Enter your User Name, Organization, and the Serial Number supplied with your DVD or download of Dragon, and then click **Next**.

The **Region Selection** screen appears.



5. Select a region to install, or select **All English regions** to install more than one region.
The region determines the accents and vocabularies available on this installation. Selecting a single region saves disk space, but users cannot create user profiles with an accent that is not included with the selected region.
6. **Optional:** To change the installation directory, select **Advanced**, then click **Next**.
The **Advanced** screen appears.



1. Click **Change...**
A Browse For Folder dialog box opens.
2. Navigate to the folder where you want to install Dragon (or create a new folder by clicking the **Make New Folder** button) and then click **OK**.

Note: By default, Dragon is installed in:

C:\Program Files(x86)\Nuance\NaturallySpeaking15

7. Click **Next** to proceed to the **Ready to Install the Program** screen.
8. Click **Install**.
The installation process begins. It may take several minutes to install Dragon Professional Individual. At times, the progress bar may not appear to be advancing, but the installation is still proceeding internally.
9. When installation of Dragon is complete, the installer displays the completion screen. Click **Finish**.
The Product Registration window appears.
10. Choose whether to register Dragon online now or to have Dragon remind you to register in seven days, and then click **OK**. Registering the product provides faster access to Nuance Technical Support.

You can open Dragon using the desktop shortcut, or find Dragon in the Start menu:

- **Windows 7:** Select **Start > All Programs > Dragon**.
- **Windows 8.1:** From the **Start** screen, select the down arrow to show all applications, and then scroll to the right to view the Dragon applications.
- **Windows 10:** Select **Start > All apps > Dragon**.

Activating Dragon

The first time you start Dragon, you are prompted to activate your copy of Dragon. If you do not activate, Dragon stops working after you start it five times.

Chapter 4: Installing the Dragon client with settings

Overview—Installing the Dragon client with initial settings	26
Prerequisites	26
Installation methods	26
Push installations	26
Installing the same Dragon configuration on multiple computers	28
Performing an administrative installation with a batch file	29
Understanding the script in admininstall.bat	29
Modifying admininstall.bat	29
Command Line installation with msiexec.exe	30
Installing the same configuration on additional computer(s)	30

Overview—Installing the Dragon client with initial settings

Use command line options to copy the settings you created in the initial Dragon installation to all your Dragon client installations.

Prerequisites

Before installing the Dragon clients:

- Have the Dragon serial number available.
- Install any pending Windows updates on clients and restart as needed.
- Copy any `.ini` files you want apply to your installation to a central location so you can access them later.

Installation methods

- `setup.exe`—see “[Installing the same Dragon configuration on multiple computers](#)” on page 28
- `Dragon 15.msi`—see “[Command Line installation with msiexec.exe](#)” on page 30
- `admininstall.bat`—see “[Performing an administrative installation with a batch file](#)” on page 29

Note: If you selected **Enable Desktop Search Commands** on the Commands tab during the initial installation, you must also install Microsoft Search on the client computers before installing Dragon.

For information on MSI options used in all Command Line installations, see the Microsoft website: [http://msdn.microsoft.com/en-us/library/aa367988\(v=vs.85\).aspx](http://msdn.microsoft.com/en-us/library/aa367988(v=vs.85).aspx).

MSI options specific to Dragon client installations are available in “[MSI properties for Dragon installations](#)” on page 54.

Hints:

- The first time you run an installation from the command line, you should use the `/qf` option rather than `/qn`. This allows you to see prompts that help you determine any problems with the command line.
- If your path name is long or contains spaces, enclose it in quotation marks. Be sure to escape each quotation mark with a backslash: `\`.
- To ensure that you receive messages about any errors that occur during the installation, pass `/L` and one or more sub-options, followed by a log file name. You can send the log file to Nuance Technical Support, should any issues arise.

Push installations

Dragon includes a native Windows Installer (MSI) that allows you to install across a network to multiple client computers. You can use `Dragon 15.msi` or `admininstall.bat` to perform a push installation.

Several servers support this type of network installation:

- Windows Server 2008 R2 and 2012 x64
- System Management Server (SMS)
- Active Directory

Dragon supports the Active Directory Assign to Computers installation option.

Installing the same Dragon configuration on multiple computers

Use the following procedure to install with `setup.exe` in the command line from a single client machine.

Note: When you are using the `setup.exe` method, you must ensure that all flags and properties are within the same set of quotes, directly after `/v`, without a space.

1. Open a Command Prompt:
 - Windows 7: **Start > All Programs > Accessories > Command Prompt**
 - Windows 8.1: From the **Start screen**, click the down arrow to show all apps, then scroll to **Windows System > Command Prompt**
 - Windows 10: **Start > All apps > Windows System > Command Prompt**
2. Insert the installation DVD and search for the directory where `setup.exe` is located.
3. In the Command Prompt window, switch to the `setup.exe` directory.
4. To install the configuration you created during the initial installation, enter the following, substituting your information as needed:

```
setup.exe /s /v"SERIALNUMBER=<SerialNumber>  
INSTALLDIR="C:\Program Files (x86)\Nuance\NaturallySpeaking15\  
DEFAULTSINI="C:\<full_path>\nsdefaults.ini\  
/L*v C:\Logs\logfile.log"
```

Performing an administrative installation with a batch file

A simple way to install Dragon from the command line is to perform an administrative installation using a .bat file. A script for performing a full administrative installation is provided in the `admininstall.bat` file included with your installer.

Caution: Only advanced administrators should perform an administrative installation.

To run the batch file:

1. Open an elevated command prompt:
 - Windows 7: Go to **Start > All Programs > Accessories**, then right-click **Command Prompt** and select **Run as administrator**.
 - Windows 8.1: From the **Start** screen, click the down arrow to show all apps, then scroll to **Windows System**. Right-click **Command Prompt** and select **Run as administrator**.
 - Windows 10: Go to **Start > All apps > Windows System**, then right-click **Command Prompt** and select **Run as administrator**.
2. In your installation folder, locate `admininstall.bat` and switch to that directory.
3. Enter `admininstall.bat` and follow it with the location of Dragon 15.msi. For example:

```
admininstall.bat "C:\<full_path>\Dragon 15.msi"
```

Understanding the script in admininstall.bat

Below are some of the lines from the script in the `admininstall.bat` file, a batch file that decompresses setup files into a network location for installation using SMS or another service.

Near the top of the batch file are the lines that check the parameters entered and, if the parameter passed is not acceptable, execute a routine that handles that situation:

```
:rem //Check and analyze input parameters
if %1==.. goto bad_args
```

If the arguments you pass when you enter the command are acceptable, the batch file sets the `NETWORK_DNS_DIR` to the location of Dragon 15.msi:

```
set NETWORK_DNS_DIR=%1%
```

When you run the `admininstall.bat` file, the file installs Dragon using a single line of code:

```
echo Installing Dragon...
setup.exe /a /s /v"/qb TARGETDIR=%NETWORK_DNS_DIR% /Liwmo!e+ %TEMP%\
admininstall.log"
```

When the installation of Dragon succeeds or fails, the batch file displays an appropriate message. The remainder of the file handles errors and cases where bad arguments are passed on the command line.

Modifying admininstall.bat

You can modify `admininstall.bat` by adding to and changing the options you pass for installing Dragon. See [“MSI properties for Dragon installations” on page 54](#) for details on the MSI options available for Dragon Professional Individual installations.

Command Line installation with msiexec.exe

Another way to install Dragon from the command line on several client computers is to use the `msiexec.exe` program from Microsoft.

The compiled MSI file, `Dragon 15.msi`, is located on your installation DVD.

You can double-click on the `.msi` file to start the InstallShield Wizard. However, to take advantage of available command line options, use the command line installation process outlined below.

Installing the same configuration on additional computer(s)

1. Open a Command Prompt:
 - Windows 7: **Start > All Programs > Accessories > Command Prompt**
 - Windows 8.1: From the **Start screen**, click the down arrow to show all apps, then scroll to **Windows System > Command Prompt**
 - Windows 10: **Start > All apps > Windows System > Command Prompt**
2. On your installation DVD, find the directory where `Dragon 15.msi` is located.
3. In the Command Prompt window, switch to the `Dragon 15.msi` directory.
4. Retrieve the customized `nsdefaults.ini` file from the computer where you performed the initial installation.
5. To install the configuration you created during the initial installation, enter the following, substituting your information as needed:

```
msiexec /i "Dragon 15.msi"  
SERIALNUMBER=<SerialNumber>  
DEFAULTSINI="<full_path>\nsdefaults.ini"  
/L*v "C:\Logs\logfile.log" /qn
```

Appendix A: Modifying nsdefaults.ini

Dragon client settings in nsdefaults.ini	32
Auto-Formatting dialog box	32
Options dialog	36
Administrative Settings dialog	50

Dragon client settings in nsdefaults.ini

A number of Dragon client settings are included in the `nsdefaults.ini` file you created when configuring your initial installation (see “Natspeak.exe Command Line Options” on page 1). The settings that are included vary based on what options you chose to configure during this initial configuration.

You can manually revise the settings in `nsdefaults.ini`, if desired, and then pass the revised file to the `DEFAULTSINI` option when installing Dragon from the command line. For information on command line installations, see “[Installing the same Dragon configuration on multiple computers](#)” on page 28.

Auto-Formatting dialog box

Auto-Formatting options

If you used the `natspeak.exe /SetDefaultFormattingOptions` command to configure default Auto-formatting options, the following setting appears in your `nsdefaults.ini` file:

Option	Description and user interface equivalent
<code>enx Turn Number Formatting</code> <code>On=0/1</code> Default: 1 (selected)	Automatically format text check box: If set to 1, Dragon formats specific text automatically during dictation. If set to 0, Dragon does not format text automatically.

The `[itnoptions.ini *]` section also appears at the top of your `nsdefaults.ini` file, detailing each option.

Note: If `enx Turn Number Formatting On` is set to 0, all Auto-Formatting will be disabled, regardless of the settings under `[itnoptions.ini *]`.

For more information about Auto-Formatting options, see the Dragon Professional Individual online help.

Syntax

Each Auto-Formatting option is listed on its own line, preceded by a semicolon (;). If you changed the default setting of a given option during the initial configuration, a second line appears showing the setting you selected. If you chose the default setting, you only see one line per option.

For example, if you disabled automatic formatting of street addresses by deselecting the **Street addresses** check box, you see:

```
;(Address) Str&eet addresses
Address=0
```

If you selected the **Street addresses** check box (the default value), you see:

```
;(Address) Str&eet addresses
```


Description and user interface equivalent	Option in ini file
<p>Web and e-mail addresses check box:</p> <p>If enabled, Dragon formats email or internet addresses automatically.</p> <p>If disabled, Dragon does not apply formatting to web and email addresses.</p> <p>Default: Enabled</p>	<p>Formatting enabled:</p> <pre>;(WebAndEmail) &Web and e-mail addresses</pre> <p>Formatting disabled:</p> <pre>;(WebAndEmail) &Web and e-mail addresses WebAndEmail=0</pre>
<p>Units of measure check box:</p> <p>If enabled, Dragon applies formatting to units of measure, such as feet and inches.</p> <p>If disabled, Dragon does not format units of measure automatically.</p> <p>Default: Enabled</p>	<p>Formatting enabled:</p> <pre>;(Measure) U&nits of measure</pre> <p>Formatting disabled:</p> <pre>;(Measure) U&nits of measure Measure=0</pre>
<p>Street addresses check box:</p> <p>If enabled, Dragon automatically applies formatting to street addresses.</p> <p>If disabled, Dragon does not format street addresses automatically.</p> <p>Default: Enabled</p>	<p>Formatting enabled:</p> <pre>;(Address) Str&eet addresses</pre> <p>Formatting disabled:</p> <pre>;(Address) Str&eet addresses Address=0</pre>
<p>ISO currency codes check box:</p> <p>If enabled, Dragon formats currency amounts with the standard ISO currency codes.</p> <p>If disabled, Dragon does not format currency amounts with ISO standards automatically.</p> <p>Default: Disabled</p>	<p>Formatting disabled:</p> <pre>;(PriceIsoCode) IS&O currency codes</pre> <p>Formatting enabled:</p> <pre>;(PriceIsoCode) IS&O currency codes PriceIsoCode=1</pre>
<p>Abbreviate titles check box:</p> <p>If enabled, Dragon abbreviates common titles such as “Mr.” or “Dr.”</p> <p>If disabled, Dragon does not abbreviate titles automatically.</p> <p>Default: Enabled</p>	<p>Formatting enabled:</p> <pre>;(AbbreviationTitle) Abbreviate tit&les</pre> <p>Formatting disabled:</p> <pre>;(AbbreviationTitle) Abbreviate tit&les AbbreviationTitle=0</pre>
<p>Phone numbers check box:</p> <p>If enabled, Dragon formats sequences of digits as phone numbers.</p> <div style="border: 1px solid black; border-radius: 10px; padding: 5px; margin-top: 10px;"> <p>Note: Dragon can only format phone numbers for the same region as the current user profile (US/Canada or UK).</p> </div>	<p>Formatting enabled:</p> <pre>;(PhoneNumber) Phone num&bers</pre>

Description and user interface equivalent	Option in ini file
<p>If disabled, Dragon does not format number sequences as phone numbers.</p> <p>Default: Enabled</p>	<p>Formatting disabled:</p> <p>; (PhoneNumber) Phone num&bers</p> <p>PhoneNumber=0</p>
<p>Dates check box:</p> <p>If enabled, Dragon formats dates in the preferred format (see next row for details).</p> <p>If disabled, Dragon does not format dates automatically.</p> <p>Default: Enabled</p>	<p>Formatting enabled:</p> <p>; (Date) &Dates</p>
	<p>Formatting disabled:</p> <p>; (Date) &Dates</p> <p>Date=0</p>
<p>Dates drop-down menu:</p> <p>If date formatting is enabled, select a preferred format for dates, such as:</p> <ul style="list-style-type: none"> • Month DD, YYYY • Mon D, YYYY • MM-DD-YY • D Month, YYYY • D/M/YY • DD-Mon-YY <p>Default: Dates As Spoken</p>	<p>Dates as spoken:</p> <p>; (DateFormat)</p>
	<p>All other formats:</p> <p>; (DateFormat)</p> <p>DateFormat=<format></p>
<p>Prices check box:</p> <p>If enabled, Dragon formats prices and currencies with the appropriate currency symbol. Supported currencies are:</p> <ul style="list-style-type: none"> • USD (\$, US\$) • CAD (C\$) • EUR (€) • JPY (¥) • GBP (£) • CHF (F) <p>If disabled, Dragon does not format currency automatically.</p> <p>Default: Enabled</p>	<p>Formatting enabled:</p> <p>; (Price) &Prices</p>
	<p>Formatting disabled:</p> <p>; (Price) &Prices</p> <p>Price=0</p>
<p>Times check box:</p> <p>If enabled, Dragon automatically formats standard or military times.</p> <p>If disabled, Dragon transcribes times exactly as spoken with no formatting.</p> <p>Default: Enabled</p>	<p>Formatting enabled:</p> <p>; (Time) &Times</p>
	<p>Formatting disabled:</p> <p>; (Time) &Times</p> <p>Time=0</p>

Description and user interface equivalent	Option in ini file
<p>Common abbreviations check box:</p> <p>If enabled, Dragon uses standard abbreviations such as “vs.” or “etc.” when transcribing dictation.</p> <p>If disabled, Dragon does not abbreviate common words automatically.</p> <p>Default: Disabled</p>	<p>Formatting disabled:</p> <pre>;(AbbreviationOther) Common abbre&viations</pre> <p>Formatting enabled:</p> <pre>;(AbbreviationOther) Common abbre&viations AbbreviationOther=1</pre>
<p>UK and Canadian postcodes check box:</p> <p>If enabled, Dragon formats sequences of letters and numbers as UK or Canadian postcodes.</p> <p>If disabled, Dragon does not format UK and Canadian postcodes automatically.</p> <p>Default: Disabled</p>	<p>Formatting disabled:</p> <pre>;(AddressUKAndCanada) U&K and Canadian postcodes</pre> <p>Formatting enabled:</p> <pre>;(AddressUKAndCanada) U&K and Canadian postcodes AddressUKAndCanada=1</pre>
<p>Expand contractions check box:</p> <p>If enabled, Dragon expands spoken contractions such as “don’t” or “isn’t.”</p> <p>If disabled, Dragon transcribes contractions exactly as dictated.</p> <p>Default: Disabled</p>	<p>Formatting disabled:</p> <pre>;(Contraction) Expand &contractions</pre> <p>Formatting enabled:</p> <pre>;(Contraction) Expand &contractions Contraction=1</pre>
<p>Other numbers check box:</p> <p>If enabled, Dragon applies formatting to numbers, such as negative numbers, fractions, and decimals.</p> <p>If disabled, Dragon will transcribe numbers exactly as dictated.</p> <p>Default: Enabled</p>	<p>Formatting enabled:</p> <pre>;(OtherNumber) Ot&her numbers</pre> <p>Formatting disabled:</p> <pre>;(OtherNumber) Ot&her numbers OtherNumber=0</pre>
<p>"million" instead of ",000,000" check box:</p> <p>If enabled, Dragon writes the word “million” instead of six zeros when users dictate round numbers in the millions.</p> <p>If disabled, Dragon writes 1,000,000.</p> <p>Default: Enabled</p>	<p>Formatting enabled:</p> <pre>;(NumberHalfFormatted) "million" inste&ad of ",000,000"</pre> <p>Formatting disabled:</p> <pre>;(NumberHalfFormatted) "million" inste&ad of ",000,000" NumberHalfFormatted=0</pre>
<p>US Social Security Numbers check box:</p> <p>If enabled, Dragon formats sequences of nine numbers as a US Social Security Number.</p>	<p>Formatting disabled:</p> <pre>;(SocialSecurityNumbers) US &Social Security Numbers</pre>

Description and user interface equivalent	Option in ini file
<p>If disabled, Dragon does not insert hyphens into nine-digit numbers.</p> <p>Default: Disabled</p>	<p>Formatting enabled:</p> <pre>;(SocialSecurityNumbers) US &Social Security Numbers SocialSecurityNumbers=1</pre>
<p>Numbers, if greater than or equal to check box:</p> <p>If enabled, Dragon formats numbers as numerals when they are greater than or equal to the specified value (0, 2, 10, or 100).</p> <p>If disabled, Dragon does not format numbers as numerals.</p> <p>Default: 10</p>	<p>Use numerals over 10:</p> <pre>;(NumberRange)</pre> <p>All other settings:></p> <pre>;(NumberRange) NumberRange=<value></pre>
<p>Insert two spaces after period check box:</p> <p>If enabled, Dragon inserts two spaces at the end of sentences.</p> <p>If disabled, Dragon adds only one space.</p> <p>Default: Disabled</p>	<p>Single space after a period:</p> <pre>;(TwoSpacesAfterPeriod) &Insert two spaces after period</pre> <p>Two spaces after a period:</p> <pre>;(TwoSpacesAfterPeriod) &Insert two spaces after period TwoSpacesAfterPeriod=1</pre>
<p>Allow pauses in formatted phrases check box:</p> <p>If enabled, Dragon applies Auto-Formatting to numbers and phrases even when users pause while saying them.</p> <p>If disabled, automatic number and phrase formatting may not take effect if the user pauses.</p> <p>Default: Enabled</p>	<p>Formatting enabled:</p> <pre>;(CrossUtteranceFormatting) Allow pauses in fo&rmatted phrases</pre> <p>Formatting disabled:</p> <pre>;(CrossUtteranceFormatting) Allow pauses in fo&rmatted phrases CrossUtteranceFormatting=0</pre>

Options dialog

If you used the `natspeak.exe /SetDefaultOptions` command to configure default client options, the [options.ini Options] section appears in your `nsdefaults.ini` file.

The exact settings you see may vary based on the tabs you visited while changing default settings.

For more information about Options dialog settings, see the Dragon Professional Individual help.

Correction settings

Option	Description and user interface equivalent
enx Select Brings Up	"Select" commands bring up Correction menu check

Option	Description and user interface equivalent
Choicebox=0/1 Default: 1 (selected)	box: If set to 1, the Correction menu appears when the user says "Select <text>" or "Select Again" in dictated text. If set to 0, the Correction menu does not appear.
Select XYZ Direction=4/8 Default: 4 (deselected)	"Select" commands search backwards check box: If set to 8, Dragon searches backward from the cursor for matching text when the user says "Select" commands. If set to 4, Dragon searches forward from the cursor.
enx Correct Brings Up Choicebox=0/1 Default: 0 (deselected)	"Correct" commands bring up Spelling Window check box: If set to 1, the Spelling window appears when the user says "Correct <text>" or "Correct That" in dictated text. If set to 0, the Spelling window does not appear.
Spell Brings Up Spell Dialog=0/1 Default: 0 (deselected)	"Spell" commands bring up Spelling Window check box: If set to 1, the Spelling window appears when the user says "Spell <letters>" or "Spell That <letters>" in dictated text. If set to 0, the Spelling window does not appear.
Automatically Add Words=0/1 Add Words on Correction=0/1 Default: 1,1 (selected)	Automatically add words to active vocabulary check box: If set to 1, Dragon adds corrected words to the active vocabulary automatically. If set to 0, users must add corrected words to Dragon's vocabulary manually using the Vocabulary Editor. <div style="border: 1px solid black; border-radius: 15px; padding: 5px; margin-top: 10px;"> Note: The values for these two options must match. </div>
Add Phrase To Voc From Spell Window=0/1	Setting is not relevant to Dragon Professional Individual.
Playback In Correction Dialog=0/1 Default: 0 (deselected)	Automatic playback on correction check box: If set to 1, Dragon plays back dictation automatically when the user corrects dictated text. If set to 0, Dragon does not play back dictation when users correct text.
Show Smart Format Rules=0/1 Default: 1 (selected)	Show Smart Format Rules check box : If set to 1 and you have also implemented auto-formatting options, Dragon prompts users when they attempt to correct auto-formatted text. If set to 0, Dragon does not prompt users when they correct

Option	Description and user interface equivalent
	auto-formatted text.
<p>Display Terse Caption In Choicebox=0/1</p> <p>Display Commands In Choicebox=0/1</p> <p>Display Choose With Choices=0/1</p> <p>Default: 0,1,1 (deselected)</p>	<p>Show only the choices check box:</p> <p>If set to 0, 1 and 1, respectively (selected), only alternative words and phrases appear on the Correction menu.</p> <p>If set to 1, 0 and 0, respectively (deselected), Dragon displays command suggestions in addition to alternative words or phrases.</p>
<p>Pin Choicebox=0/1</p> <p>Default: 0 (deselected)</p>	<p>Anchor check box:</p> <p>If set to 1, the Correction menu remains in its current location until the user manually drags it to a new location.</p> <p>If set to 0, the Correction menu floats around the window as the user selects text by voice.</p>
<p>Double Click for Correction=0/1</p> <p>Default: 0 (deselected)</p>	<p>Enable double-click to correct check box:</p> <p>If set to 1, the Correction menu opens when the user double-clicks a word.</p> <p>If set to 0, the Correction menu does not open when the user double-clicks a word.</p>
<p>enx Max Items in Choicebox=<1-9></p> <p>Default: 9</p>	<p>Show no more than <number> options number box:</p> <p>Determines the maximum number of choices that appear in the Correction menu.</p>

Commands settings

Option	Description and user interface equivalent
<p>Enable Mouse Motion Mode=0/1</p> <p>Default: 1 (selected)</p>	<p>Enable mouse motion commands check box:</p> <p>If set to 1, enables mouse motion commands, such as “Move Mouse Left.”</p> <p>If set to 0, mouse motion commands are disabled.</p>
<p>Mouse Movement=<1-25></p> <p>Default: 2</p>	<p>Mouse movement speed numbers box in the Speed dialog box:</p> <p>Sets the speed of mouse movement when using mouse motion commands.</p> <p>Use a number between 1 (slowest) and 25 (fastest).</p>
<p>Enable IE Support=0/1</p> <p>Default: 1 (selected)</p>	<p>Enable HTML support check box:</p> <p>If set to 1, allows Dragon to work with Internet Explorer, Firefox, and Chrome.</p> <p>If set to 0 and the Dragon Web Extension is installed, the user cannot select web page elements by voice or dictate</p>

Option	Description and user interface equivalent
	directly in web page fields.
Enable IE Commands=0/1 Default: 1 (selected)	Enable commands in HTML windows check box: If set to 1, enables commands for use with Internet Explorer, Firefox, and Chrome. If set to 0, disables some Internet Explorer, Firefox, and Chrome commands, and voice commands in some Microsoft Outlook dialog boxes.
Enable HTML Custom API=0/1 Default: 1	Not relevant to Dragon Professional Individual.
Click Command Required in IE=0/1 Default: 1 (selected)	Require "Click" to select hyperlinks in HTML windows check box: If set to 1, Dragon requires users to say "Click <link text>" to click a link in web browsers. This option prevents Dragon from clicking links unintentionally during dictation. If set to 0, users can say the link text to click.
Click Command Required For Menus=0/1 Default: 1 (selected)	Require "Click" to select menus check box: If set to 1, Dragon requires users to say "Click <menu>" to open a menu. This option prevents Dragon from clicking menus unintentionally during dictation. If set to 0, users can say the name of the menu to click.
Click Command Required For Controls=0/1 Default: 1 (selected)	Require "Click" to select buttons and other controls: If set to 1, Dragon requires users to say "Click <control>" to click a button or other control. This option prevents Dragon from clicking menus unintentionally during dictation. If set to 0, users can say the name of a button or control to click.
Use Recognition Mode Commands=0/1 Default: 1 (selected)	Enable recognition mode switching commands check box: If set to 1, users can switch recognition modes by voice. If set to 0, users must switch recognition modes using the DragonBar.
Start Web Search=0/1 Default: 1 (selected)	Enable Web search commands check box: If set to 1, enables Web searching commands based on natural speech. For example, "Search the web for weather in Seattle." If set to 0, disables web searching commands.
Start Desktop Search=0/1	Enable Desktop search commands check box:

Option	Description and user interface equivalent
<p>Default: 1 (selected)</p>	<p>If set to 1, enables Desktop searching commands based on natural speech. For example, “Search Computer for time sheets.”</p> <p>If set to 0, disables Desktop searching commands.</p>
<p>Edit Intuitive Search Keywords=0/1</p> <p>Default: 1 (selected)</p>	<p>Display search text before performing search check box:</p> <p>If set to 1, Web and Desktop search commands appear in the Edit Search Keywords dialog box before Dragon performs the search. Use this option to edit the search terms or insert special characters.</p> <p>If set to 0, Dragon performs Web and Desktop searches without allowing the user to edit the search terms.</p>
<p>Start Email=0/1</p> <p>Default: 1 (selected)</p>	<p>Enable email and Calendar commands check box:</p> <p>If set to 1, enables Microsoft Outlook commands based on natural speech. These commands allow users to create email, appointments, meetings, and tasks.</p> <p>If set to 0, disables the natural-language Email and Calendar commands.</p>
<p>Do Cut XYZ=0/1</p> <p>Default: 0 (deselected)</p>	<p>Enable Cut shortcut commands check box:</p> <p>If set to 1, enables the Cut shortcut command.</p> <p>If set to 0, the user must first select the text and then say “Cut That.”</p>
<p>Do Delete XYZ=0/1</p> <p>Default: 1 (selected)</p>	<p>Enable Delete shortcut commands check box:</p> <p>If set to 1, enables the Delete shortcut command.</p> <p>If set to 0, the user must first select the text and then say “Delete That.”</p>
<p>Do Delete From XYZ=0/1</p>	<p>Setting is not relevant for Dragon Professional Individual.</p>
<p>Do Copy XYZ=0/1</p> <p>Default: 1 (selected)</p>	<p>Enable Copy shortcut commands check box:</p> <p>If set to 1, enables the Copy shortcut command.</p> <p>If set to 0, the user must first select the text and then say “Copy That.”</p>
<p>Show disambiguation numbers=0/1</p> <p>Default: 1(selected)</p>	<p>Enable multiple text matches check box:</p> <p>If set to 1, enables Dragon to find multiple matches to text matching commands.</p> <p>If set to 0, Dragon finds only the matching text instance closest to the cursor position.</p>
<p>Enable Starting Apps On StartMenu=0/1</p>	<p>Enable launching from the Start menu check box:</p>

Option	Description and user interface equivalent
<p>Default: 1 (selected)</p>	<p>If set to 1, users can open applications on the Start menu by voice using direct commands, such as “Open Microsoft Word.”</p> <p>If set to 0, users must say the full Start menu path, such as “Click Start,” then “Click All Programs,” then “Click Microsoft Word.”</p>
<p>Enable Starting Apps On Desktop=0/1</p> <p>Default: 1 (selected)</p>	<p>Enable launching from the desktop check box:</p> <p>If set to 1, users can launch applications, open folders, and shortcuts on the Desktop by voice using direct commands, such as “Open My Documents.”</p> <p>If set to 0, users cannot launch from the Desktop by voice.</p>
<p>Left Text Field Delimiter=[Right Text Field Delimiter=]</p> <p>Default: Left bracket ([) and Right bracket (])</p>	<p>Left variable delimiter and Right variable delimiter text boxes:</p> <p>Determines the delimiters used to indicate variable fields in Auto-Text commands. You can specify delimiters up to five characters long. You cannot specify the same value for each delimiter.</p> <div data-bbox="711 953 1349 1163" style="border: 1px solid black; border-radius: 10px; padding: 10px; margin-top: 10px;"> <p>Note: If you change the default delimiters, Dragon uses the new delimiters for Auto-Text commands, but ignores variables in square brackets when you use the Accept Defaults and Clear Variable Delimiters commands.</p> </div>
<p>Enable Automatically Select First Field=0/1</p>	<p>Setting is not relevant for Dragon Professional Individual.</p>
<i>More Commands</i>	
<p>Default: Selected</p>	<p>Enable Natural Language commands check box</p> <div data-bbox="711 1394 1349 1493" style="border: 1px solid black; border-radius: 10px; padding: 10px; margin-top: 10px;"> <p>Note: This option is controlled by the two settings below.</p> </div>
<p>enx Use Natural Language Commands=0/1</p> <p>Default: 1</p>	<p>If set to 1, enables Natural Language Commands. This feature requires an additional 8MB of memory.</p> <p>If set to 0, disables all Natural Language Commands.</p>
<p>Disable NLP support=0/1</p> <p>Default: 0</p>	<p>If set to 0, enables application-specific Natural Language Commands.</p> <p>If set to 1, disables application-specific Natural Language Commands. Global Natural Language Commands remain enabled.</p>
<p>Enable NLP Word=0/1</p>	<p>Enable Microsoft Word commands check box</p>

Option	Description and user interface equivalent
<p>Default: 1 (selected)</p>	<p>If set to 1, enables Natural Language Commands in Microsoft Word.</p> <p>If set to 0, disables Natural Language Commands in Microsoft Word.</p>
<p>Enable NLP Excel=0/1</p> <p>Default: 1 (selected)</p>	<p>Enable Microsoft Excel commands check box:</p> <p>If set to 1, enables Natural Language Commands in Microsoft Excel.</p> <p>If set to 0, disables Natural Language Commands in Microsoft Excel.</p>
<p>Enable NLP PowerPoint=0/1</p> <p>Default: 1 (selected)</p>	<p>Enable Microsoft PowerPoint commands check box:</p> <p>If set to 1, enables Natural Language Commands in Microsoft PowerPoint.</p> <p>If set to 0, disables Natural Language Commands in Microsoft PowerPoint.</p>
<p>Enable NLP WordPerfect=0/1</p> <p>Default: 1 (selected)</p>	<p>Enable Corel WordPerfect commands check box:</p> <p>If set to 1, enables Natural Language Commands in Corel WordPerfect.</p> <p>If set to 0, disables Natural Language Commands in Corel WordPerfect.</p>
<p>Turn Off Facebook Commands=0/1</p> <p>Default: 1 (selected)</p>	<p>Enable Facebook post commands check box:</p> <p>If set to 1, enables posting directly to Facebook by voice.</p> <p>If set to 0, users must browse to Facebook in a Web browser to post.</p>
<p>Turn Off Twitter Commands=0/1</p> <p>Default: 1 (selected)</p>	<p>Enable Twitter post commands check box:</p> <p>If set to 1, enables posting directly to Twitter by voice.</p> <p>If set to 0, users must browse to Twitter in a Web browser to post.</p>

Appearance settings

Option	Description and user interface equivalent
<i>DragonBar</i>	
<p>DragonBar Mode=0/1/2/3/5</p> <p>Default: 5 (Modern)</p>	<p>Mode radio buttons:</p> <p>Determines the location and appearance of the DragonBar. The options are:</p> <ul style="list-style-type: none"> • Modern (5)—The Modern DragonBar appears at the top of your screen. • Docked to Top (0)—The Classic DragonBar appears docked to the screen’s edge. DragonBar

Option	Description and user interface equivalent
	<p>Docked Mode, below, determines the placement of the DragonBar.</p> <ul style="list-style-type: none"> • Docked to Bottom (0)—The Classic DragonBar appears docked to the screen's edge. DragonBar Docked Mode, below, determines the placement of the DragonBar. • Floating (1)—The Classic DragonBar appears as a window on top of other open windows. Users can drag the Classic DragonBar to reposition it. • Cling (2)—The Classic DragonBar appears at the top of the current active window. • Tray Icon Only (3)—The DragonBar appears only as a microphone icon in the system tray. Applies to both DragonBars. Right-click on the icon to open the DragonBar menu. <p>Note: This setting determines the availability of the options below.</p>
<p>Modern DragonBar Auto Collapse=0/1 Default: 1 (selected)</p>	<p>Auto-collapse check box:</p> <p>If set to 1, the Modern DragonBar collapses when not in use.</p> <p>If set to 0, the Modern DragonBar remains expanded at all times.</p> <p>Note: If DragonBar Mode is not set to 5, this setting is ignored.</p>
<p>DragonBar Docked Mode=0/1 Default: None</p>	<p>If set to 1, the Classic DragonBar is docked to the bottom of the screen.</p> <p>If set to 0, the Classic DragonBar is docked to the top of the screen.</p> <p>Note: This setting is only used if DragonBar Mode is set to 0.</p>
<p>DragonBar Shows Extras=0/1 Default: 0 (deselected)</p>	<p>If set to 1, the Extras toolbar appears on the Classic DragonBar.</p> <p>If set to 0, the Extras toolbar does not appear.</p> <p>Note: If DragonBar Mode is set to 5, this setting is ignored.</p>
Results Box	
<p>Results Box Pinned=0/1</p>	<p>Anchor check box:</p>

Option	Description and user interface equivalent
<p>Default: 0 (deselected)</p>	<p>If set to 1, the Results box is locked in place until the user drags it to a new location.</p> <p>If set to 0, the Results box appears with the text as the user dictates.</p>
<p>Results Box Feedback Strategy=10/20</p> <p>Default: 20 (deselected)</p>	<p>Show preliminary results check box:</p> <p>If set to 10, preliminary and final results appear in a text box before dictation is transcribed in the document.</p> <p>If set to 20, only final results appear.</p>
<p>enx Beep On Phrase Finish=0/1</p> <p>Default: 0 (deselected)</p>	<p>Beep after recognition check box:</p> <p>If set to 1, Dragon beeps each time it recognizes a word or phrase.</p> <p>If set to 0, no sound occurs.</p>
<div style="border: 1px solid black; border-radius: 10px; padding: 5px; width: fit-content;"> <p>Note: This option is controlled by the three settings below.</p> </div> <p>Default: Never hide</p>	<p>Auto-hide delay drop-down menu:</p> <p>Determines whether the Results box is shown, and if shown, how long it appears.</p>
<p>Results Box Disable=0/1</p> <p>Default: 0</p>	<p>If set to 1, the Results box is never shown. Results Box Enable Auto Close and Results Box Auto Close Delay are ignored.</p> <p>If set to 0, the Results box is shown when Dragon is listening.</p>
<p>Results Box Enable Auto Close=0/1</p> <p>Default: 0</p>	<p>If set to 0, the Results box is always visible when Dragon is listening. Results Box Auto Close Delay settings are ignored.</p> <p>If set to 1, the Results box auto-hides after a period of time specified in Results Box Auto Close Delay.</p>
<p>Results Box Auto Close Delay=<seconds></p> <p>Default: 10</p>	<p>Determines the delay, in seconds, that Dragon waits before auto-hiding the Results Box.</p>

Hot keys settings

Note: Hot keys are noted in the format <JavaScript key code>, <modifier>. Modifier keys are noted as follows: No modifier=0; Shift=1; Alt=2; Ctrl=4

Option	Description and user interface equivalent
<p>Microphone Hot Key= <key>, <modifier></p>	<p>Microphone on/off key combination:</p> <p>Turns Dragon's microphone on and off.</p>

Option	Description and user interface equivalent
	Default: 107,0 {NumKey+}
Correction Hot Key= <key>,<modifier>	<p>Correction key combination: Opens the Correction menu.</p> <div style="border: 1px solid black; border-radius: 10px; padding: 5px; margin: 10px 0;"> <p>Note: You cannot open the Correction menu using a hot key when you are working in Web applications.</p> </div> <p>Default: 109,0 {NumKey-}</p>
Command Only Hot Key= <key>,<modifier>	<p>Force command recognition key combination: Forces Dragon to recognize words as commands rather than dictation.</p> <p>Default: 0,4 {Ctrl}</p>
Dictation Only Hot Key= <key>,<modifier> Default: 0,1 {Shift}	<p>Force dictation recognition key combination: Forces Dragon to recognize words as dictation rather than commands.</p>
DragonBar Hot Key= <key>,<modifier> Default: 106,0 {NumKey*}	<p>DragonBar menu key combination: Opens the DragonBar Profile menu.</p> <div style="border: 1px solid black; border-radius: 10px; padding: 5px; margin: 10px 0;"> <p>Note: To use with the New DragonBar, the DragonBar must not be collapsed.</p> </div>
Sleep Hot Key=<key>,<modifier> Default: 111,64 {NumKey/}	<p>Microphone sleep/on key combination: Puts Dragon's microphone to sleep and wakes it up.</p>
Press-To-Talk Hot Key= <key>,<modifier> Default: 0,0 (none)	<p>Press-to-talk key combination: Allows you to talk to Dragon while you hold down the key. Dragon stops listening when you release the key.</p>
Dictation Box Hot Key= <key>,<modifier> Default: 68,5 {Ctrl+Shift+D}	<p>DictationBox key combination: Opens the Dictation Box.</p>
Playback Hot Key= <key>,<modifier> Default: 109,1 {Shift+NumKey-}	<p>Playback key combination: Plays back dictation.</p>
Fast Playback Hot Key= <key>,<modifier> Default: 106,1 {Shift+NumKey*}	<p>Fast Playback key combination: Increases the playback speed.</p>
Select Next Variable Hot Key= <key>,<modifier> Default: 78,5 {Ctrl+Shift+N}	<p>Next Field key combination: Selects the next variable field (Voice field) in an Auto-text. For more information on Auto-text fields, see the Dragon</p>

Option	Description and user interface equivalent
	Professional Individual help.
enx Autopunctuation Hot Key= <key>,<modifier>	Setting is not relevant for Dragon Professional Individual.
Light Editor Hot Key= <key>,<modifier>	Setting is not relevant for Dragon Professional Individual.
Transfer Text Hot Key= <key>,<modifier>	Setting is not relevant for Dragon Professional Individual.
Hidden Mode Hot Key= <key>,<modifier>	Setting is not relevant for Dragon Professional Individual.

Playback/Text-to-speech settings

Option	Description and user interface equivalent
Playback Volume=<1-100> Default: 100	Playback volume number box: Sets the playback volume.
Playback Speed=<1-999> Default: 100	Playback speed number box: Sets the playback speed.
Fast-forward Volume=<1-100> Default: 100	Fast-forward volume number box: Sets the fast forward volume if Rewind/Fast-Forward sounds are enabled.
Fast-forward Speed=<1-999> Default: 150	Fast-forward number box: Sets the fast forward speed.
Rewind Volume=<1-100> Default: 100	Rewind volume number box: Sets the rewind volume if Rewind/Fast-Forward sounds are enabled.
Rewind Speed=<1-999> Default: 150	Rewind speed number box: Sets the rewind speed.
Monkey Cheater On=0/1 Default: 1 (selected)	Play Rewind/Fast-Forward sound check box: If set to 1, Dragon plays a sound when you fast forward or rewind a selection. If set to 0, Dragon does not play a sound.
Text-to-speech attributes	
[local.ini Options]	
TTS Volume=<0-255> Default: 255	Volume slider: Sets text-to-speech playback volume.

Option	Description and user interface equivalent
enx TTS Speed=<0-255> Default: 125	Speed slider: Sets text-to-speech playback speed.
enx TTS Mode Name=<Voice> Default: American English Samantha	Voice drop-down menu: Sets the voice used for text-to-speech playback.

Miscellaneous settings

Option	Description and user interface equivalent
DragonBar Launch Item=0/1 Default: 0 (deselected)	Launch DragonPad check box: If set to 0, DragonPad opens when Dragon starts. If set to 1, DragonPad opens only when you select it from the Tools menu.
Microphone on at startup=0 Default: 0 (deselected)	When the User Profile Opens Have the microphone on but asleep check box: If set to 1, the microphone is in Sleep mode when Dragon starts. If set to 0, the microphone is off when Dragon starts.
Use Screen Reader Compatible Menus=0/1 Default: 0 (deselected)	Use menus that are compatible with screen readers check box: If set to 1, allows a screen reader program to read menu items out loud to vision-impaired users. If set to 0, some screen readers may not read Dragon's menu items accurately.
enx Use Active Accessibility=0/1 Default: 1 (selected)	Voice-enable menus, buttons, and other controls, excluding check box: If set to 1, users can control user interface elements by voice. If set to 0, voice control of user interface elements is disabled for all applications. To turn off voice control in specific applications, use the drop-down menu or the Tracking Disabled App List setting.
Tracking Disabled App List={<applications>} Default: {} (no selection)	Voice-enable menus, buttons, and other controls, excluding drop-down menu: Disables voice control of user interface elements in specific applications.
User Specific Time Before Mic Sleep=<number> Default: 5	Put the microphone to sleep after <n> minutes of silence number box:

Option	Description and user interface equivalent
	<p>Determines the number of minutes of silence after which Dragon puts the microphone into Sleep mode. Specify a value between 5 and 120 minutes.</p> <div style="border: 1px solid black; border-radius: 10px; padding: 10px; margin: 10px 0;"> <p>Note: Nuance does not recommend a value greater than 10, as Dragon can misrecognize ambient noise as speech.</p> </div>
<p>bAlertWhenSignalQualityIsPoor=0/1 Default: 1 (selected)</p>	<p>Alert when audio quality is low check box:</p> <p>If set to 1, Dragon warns users when dictation audio quality is low.</p> <p>If set to 0, Dragon suppresses audio quality alerts.</p>
<p>Use Dictation Box=0/1 Default: 1 (selected)</p>	<p>User Dictation Box for unsupported applications check box:</p> <p>If set to 1, Dragon's Dictation Box appears automatically when you dictate in a text field where Full Text Control is unavailable (PowerPoint or Google Docs, for instance.)</p> <p>If set to 0, the Dictation Box does not automatically appear.</p>
<p>Alert On Compatibility Module Disconnection=0/1</p>	<p>Alert in case of disconnections of target applications check box:</p> <p>If set to 1, a warning appears when a Dragon compatibility module for a supported application becomes disabled. Compatibility modules enable Full Text Control.</p> <p>If set to 0, no warning appears.</p> <p>Default: 1 (selected)</p>
<p>Use Light Editor=0/1</p>	<p>Setting does not apply to Dragon Professional Individual.</p>
<p>Sample commands launch on open=0/1</p>	<p>Setting does not apply to Dragon Professional Individual.</p>

Data settings

Option	Description and user interface equivalent
<p>Save Correction To Archive=0/1 Default: 1 (selected)</p>	<p>Store corrections in archive check box:</p> <p>If set to 1, stores corrections for use by Dragon's Acoustic and Language Model Optimizer.</p> <p>If set to 0, Dragon displays a message that there is not enough data to continue when optimization runs.</p>
<p>AO Archive Time Limit=<number></p>	<p>Archive Size slider in the Archive Size dialog box:</p>

Option	Description and user interface equivalent
Default: 3360000 milliseconds maximum	Sets the acoustic data archive size in milliseconds. Dragon requires approximately 80 MB of disk space for 30 minutes of acoustic data.
Collect Dictation Data=0/1 Default: 1 (deselected)	Conserve disk space required by user profile check box: If set to 1, Dragon maintains a standard-sized set of user profiles. If set to 0, Dragon maintains a smaller set of user profiles to allow you to move them to other computers more efficiently.
Save Speech With Document=0/1/2 Default: 2 (Always)	Save recorded dictation with document drop-down: Determines whether dictation audio (.DRA files) is saved when the user saves a dictated document. The options are: <ul style="list-style-type: none"> • 0=Never • 1=Ask me • 2=Always
Backup Frequency=<number> Default: 5	Automatically back up user profile every <number> saves number box check box: Determines how often Dragon backs up user profiles when the user saves them. <div style="border: 1px solid black; border-radius: 10px; padding: 5px; margin-top: 10px;"> <p>Note: This option is ignored if you set Disable Back Up User Profiles=1.</p> </div>
Disable Back Up User Profiles=0/1 Default: 0 (deselected)	Don't back up user profile check box: If set to 1, Dragon does not back up user profiles. If set to 0, Dragon backs up user profiles using the Backup Frequency=<number> setting above.
V6 Additional Training=0/1	Setting does not apply to Dragon Professional Individual.
Advanced dialog box	
Do Usability Logging=0/1 Default: 0 (deselected)	Create usability log check box: If set to 1, Dragon logs all menu commands, toolbar buttons, and voice commands used during a dictation session. If set to 0, Dragon does not create a usability log. If you call Nuance technical support, you may be asked to create a usability log.

Administrative Settings dialog

If you used the `natspeak.exe /SetDefaultAdministrativeOptions` command to configure default client options, the [nssystem.ini Settings] section appears in your `nsdefaults.ini` file.

For more information about Administrative Settings dialog settings, see the Dragon Professional Individual help.

Miscellaneous settings

Option	Description and user interface equivalent
Default Backup Location for User Profiles=<full path> Default: Blank	Backup location for user profiles field: Sets the location where Dragon stores customized words and commands.
Custom Directory=<full path> Default: C:\ProgramData\Nuance\NaturallySpeaking15\custom	Data Distribution location field: Sets the location where Dragon stores customized words and commands.
Disable command changes for restricted users=0/1 Default: 0 (deselected)	Do not allow restricted users to add or modify commands check box: If set to 1, restricted Windows users cannot add or modify Dragon commands. Restricted users can, however, delete, import, and export commands using the Command Browser. If set to 0, all Windows users can add and modify Dragon commands.
Global MyCommands MacroRecorder=0/1 Default: 1 (deselected)	Disable use of Macro Recorder commands check box: If set to 1, users cannot create or edit macro recorder commands. Users can still run the commands, however. If set to 0, users can create and edit macro recorder custom commands.
Global MyCommands StepByStep Scripting=0/1 Default: 1 (deselected)	Disable use of Step-by-Step commands check box: If set to 1, users cannot create or edit step-by-step custom commands. Users can still run the commands, however. If set to 0, users can create and edit step-by-step commands.
Global MyCommands VBA Scripting=0/1	Disable use of Advanced Scripting

Option	Description and user interface equivalent
Default: 1 (deselected)	commands check box: If set to 1, users cannot create or edit scripting custom commands. Users can still run the commands, however. If set to 0, users can create and edit scripting commands.
Disable vocabulary changes for restricted users=0/1 Default: 0 (deselected)	Do not allow restricted users to modify vocabularies check box: If set to 1, restricted Windows users cannot modify vocabularies. If set to 0, all Windows users can modify vocabularies.
Global Enable Pause Results=0/1 Default: 0 (deselected)	Record wave data between utterances check box: If set to 1, Dragon saves all audio during dictation, including pauses, background noises, and coughing. If set to 0, Dragon deletes audio that does not contain speech.
enx ACO uses Auto Accent AM selection=0/1 Default: 1 (deselected)	Disable automatic acoustic model selection in Acoustic Optimizer check box: If set to 1, Acoustic Optimization cannot automatically select an acoustic model that more closely matches the user's accent. If set to 0, Acoustic Optimization selects a different acoustic model automatically if necessary.

Scheduled Tasks tab

Option	Description and user interface equivalent
Data Collector Batch Mode=0/1 Default: 1 (selected)	Enable scheduled Data Collection check box: If set to 1, enables Data Collection, which allows Dragon to collect up to 500 MB of data and text from your dictation sessions. If set to 0, disables Data Collection.
Allow Users to Optimize=0/1 Default: 1 (selected)	Enable scheduled Accuracy Tuning check box: If set to 1, enables Accuracy Tuning.

Option	Description and user interface equivalent
	If set to 0, disables Accuracy Tuning.

Appendix B: Options for MSI installations

MSI properties for Dragon installations	54
Sample command lines	55
Feature variables to set through the ADDLOCAL or ADVERTISE properties	56
Speech options	57
MSI options for scheduled tasks	58
Extracting MSI/MST files from the Dragon setup.exe	59

MSI properties for Dragon installations

This section describes the `msiexec.exe` properties that apply to Dragon Professional Individual. For information about Windows Installer-defined properties, see the Microsoft Dev Center for Windows Installer: <https://msdn.microsoft.com/en-us/library/windows/desktop/aa370905.aspx>.

Syntax

- To install using `msiexec.exe`, use the syntax:

```
msiexec.exe /i "Dragon 15.msi" <PROPERTY>=<VALUE>
```

- To install using `setup.exe`, put all `msiexec.exe` properties in quotation marks after the `/v` option:

```
setup.exe /v"<PROPERTY>=<VALUE>"
```

- Dragon command line options do not need to be prefaced by hyphens or slashes.
- Unless otherwise noted, all property values are in UPPERCASE.

Note: If you use the `/qn` switch, no dialogs will display during installation, even if you set them to display in the command line.

Options	Description
SERIALNUMBER=<serial_number> Required	Specify a valid serial number. A serial number is required for all installations. <div style="border: 1px solid black; border-radius: 10px; padding: 5px; margin: 10px 0;"> <p>Note: Specifying a serial number on the command line does not bypass the serial number checking during Setup.</p> </div>
DEFAULTSINI="<full_path>\nsdefaults.ini" Optional	Indicates the default settings file (<code>nsdefaults.ini</code>) that you created when configuring the installer (see "Natspeak.exe Command Line options" on page 1). The Dragon installer uses this file to change the default settings for all users.
PERIODIC_TASK=<tasks>;<admin>;<password>;<Day>, <hh:mm> Optional	Configures the Acoustic Model Optimizer, Language Model Optimizer and Data Collection tasks in the Scheduled Tasks tab of the Administrative Settings dialog. See "MSI options for scheduled tasks" on page 58 for details.
REGION=<region> Optional: If omitted, Dragon installs the default regions: All for English-language installations, or None for non-English installations.	Set the REGION to include with your installation. The available English-language regions are: <ul style="list-style-type: none"> • United States (UnitedStates or US) • Canada (Canada) • United Kingdom (UnitedKingdom or UK) • Australia/New Zealand (Australia or NewZealand) • Indian subcontinent (IndianSubcontinent or Indian) • Southeast Asia (SoutheastAsia or Asia) To install all English-language regions, set REGION=All. Set REGION=NoEnglish or REGION=None if you do not need to install any English-language regions.

Options	Description
REMOVEOLDPROD=1	Set REMOVEOLDPROD to 1 to remove the old version of the product before installing the new version. You should only use this option for major upgrades.

Sample command lines

msiexec.exe command line

```
msiexec.exe /i "Dragon 15.msi"
SERIALNUMBER=<serial_number>
DEFAULTSINI="C:\<full_path>\nsdefaults.ini"
INSTALLDIR="C:\Program Files\Nuance\NaturallySpeaking15"
PRODUCTUPDATEFLAG=1 REBOOT=ReallySuppress
PERIODIC_TASK="aco|lmo;admin;pswd;Mon, 01:00|Mon, 06:00"
ADDLOCAL=TTSENX,NatSpeak,ENUGeneral
/L*v "C:\Logs\logfile.log" /qn
```

setup.exe command line

```
setup.exe /s /v"SERIALNUMBER=<serial_number>
DEFAULTSINI=\"C:\<full_path>\nsdefaults.ini\"
INSTALLDIR=\"C:\Program Files\Nuance\NaturallySpeaking15\"
PRODUCTUPDATEFLAG=-1 REBOOT=ReallySuppress
PERIODIC_TASK="aco|lmo;admin;pswd;Mon, 01:00|Mon, 06:00"
ADDLOCAL=TTSENX,NatSpeak,ENUGeneral
/L*v C:\Logs\logfile.log /qn"
```

Feature variables to set through the ADDLOCAL or ADVERTISE properties

You can specify any of the features in the table below using ADDLOCAL and ADVERTISE properties on the command line. For example:

```
ADDLOCAL=NatSpeak, TTSENU, ENU
```

When specifying features on the command line:

- If a feature does not exist in a particular edition or language, overriding its default property has no effect.
- Some features (such as Text-to-Speech) have sub-features. Setting these features on the command line automatically turns on the properties of all sub-features, unless you specify an additional override for those sub-features.

Feature	Sub-features
NatSpeak <div style="border: 1px solid black; border-radius: 10px; padding: 5px; width: fit-content;"> Note: Required in ADDLOCAL; if not included, the installation will fail. </div>	None
Samples (Sample Commands file)	None
TTS (Text-to-Speech)	<ul style="list-style-type: none"> • TTSENU (US English Text-to-Speech) • TTSENG (British English Text-to-Speech) • TTSDEU (German Text-to-Speech) • TTSESP (Spanish Text-to-Speech) • TTSFRA (French Text-to-Speech) • TTSITA (Italian Text-to-Speech) • TTSNLD (Dutch Text-to-Speech)
Tutorial (iTutorial)	None

Speech options

You can also add or advertise the following datapacks. Each includes all sub-features, including vocabularies and accents:

- ENU (US English)
- ENC (Canadian English)
- ENG (UK English)
- AUS (Australia/New Zealand English)
- IND (Indian Subcontinent English)
- SEA (Southeast Asia English)
- DEU (German)
- ITA (Italian)
- NLD (Dutch)
- FRA (French)
- ESP (Spanish)

MSI options for scheduled tasks

Note: Take the following actions on the client computer. Do not perform them on the computer where you performed the initial installation and configured default option settings.

You can include an additional option on the command line to run one or more of the following tasks on a particular schedule:

- **Acoustic model optimization (ACO)**—This task optimizes the acoustic models used to interpret the user's speech. You can set a particular date and time for this optimization to occur. When a speaker is new to Dragon, you might want to run the optimization more often.
- **Language model optimization (LMO)**—This task optimizes the language model (vocabulary files) used to help recognize words that the end-user speaks. The model incorporates data from the end-user's speech into the language model he or she is using, customizing the model for that user profile.
- **Data collection (DC)** — This task automatically collects data that helps improve Dragon's ability to recognize speech. You can choose to allow this data to be sent back to Nuance over the Internet on a particular schedule or choose not to send the data. This process does not collect your personal information. Data collection is available in non-US English versions of Dragon Professional Individual.

You can schedule the above tasks and turn them on or off by passing an option called PERIODIC_TASK to the MSI installer.

First, set PERIODIC_TASK to a string containing short acronyms for the types of tasks, separated by vertical bars: `aco | lmo | dc`

If you do not pass the acronym for a feature, that feature is set to its default.

Next, the string for PERIODIC_TASK should include the administrator login and password, followed by the schedule for each task, in the order that they occur in the string, separated by vertical bars.

- Enter the day(s) of the week for each task using three-letter abbreviations (Mon, Tue, etc.).
- Enter the hour using a 24-hour clock in the format `hh:mm` (05:00, 18:30, etc.).

For example, the string below sets the schedule for Acoustic Model Optimization to Mondays at 1 AM and the Language Model Optimization to Mondays at 6 AM:

```
PERIODIC_TASK="aco|lmo;admin;pswd;Mon, 01:00|Mon, 06:00"
```

The task runs once a week on the day and time indicated. If you omit the Day, the task runs every day at the time given. Because no schedule is specified for Data Collection, the default schedule will be used.

Default Schedules

- Acoustic model optimization (ACO) — Every day, 3 AM
- Language model optimization (LMO) — Every day, 2 AM

Extracting MSI/MST files from the Dragon setup.exe

Some minor releases of Dragon do not include an MSI file. Instead, the file is part of the `setup.exe` file. You can run silent installations from the command line with `msiexec.exe` or `setup.exe` – you don't need to extract the `.msi` and `.mst` files. Use the following information if you are comfortable using `.msi` installers.

The following sample command line extracts the `Dragon 15.msi` file and the `.mst` files used for installing Dragon:

```
setup.exe /a /s /v"EXTRACTFILES=c:\temp\MSIfiles /qn"
```

