

# Replacing the Battery on the Sennheiser DW Pro1 & 2

---

speakeasysolutions.com/blog/2014/01/13/replacing-the-battery-on-the-sennheiser-dw-pro1-2

By Alexandria

January 13,  
2014

The Sennheiser DW Pro wireless microphone has been out long enough for most users to begin experiencing a reduction in battery performance. Once the battery no longer holds its charge, it is definitely time for replacement. This will likely occur after approximately 2.5 years.



Replacement batteries can be purchased from [Speakeasy Solutions](#). [Contact us](#) to order. Only use spare rechargeable batteries recommended by Sennheiser Communications.

If your headset does not seem to be holding its charge and it is less than 2 years, you may need to simply troubleshoot the device. Unplug the base from the computer as well as the power, wait a few moments, and then plug back into your computer and the power.

Instructions for replacing the headset's rechargeable battery are below, along with a PDF of the complete manual.

## Replacing the Headset's Rechargeable Battery

---

### **CAUTION:**

**Damage to the product due to improper handling — the cable connections can be damaged when subjected to mechanical stress. Open the battery compartment cover (8) and carefully loosen the connector plug of the rechargeable battery.**

### Pro1 Headset

---

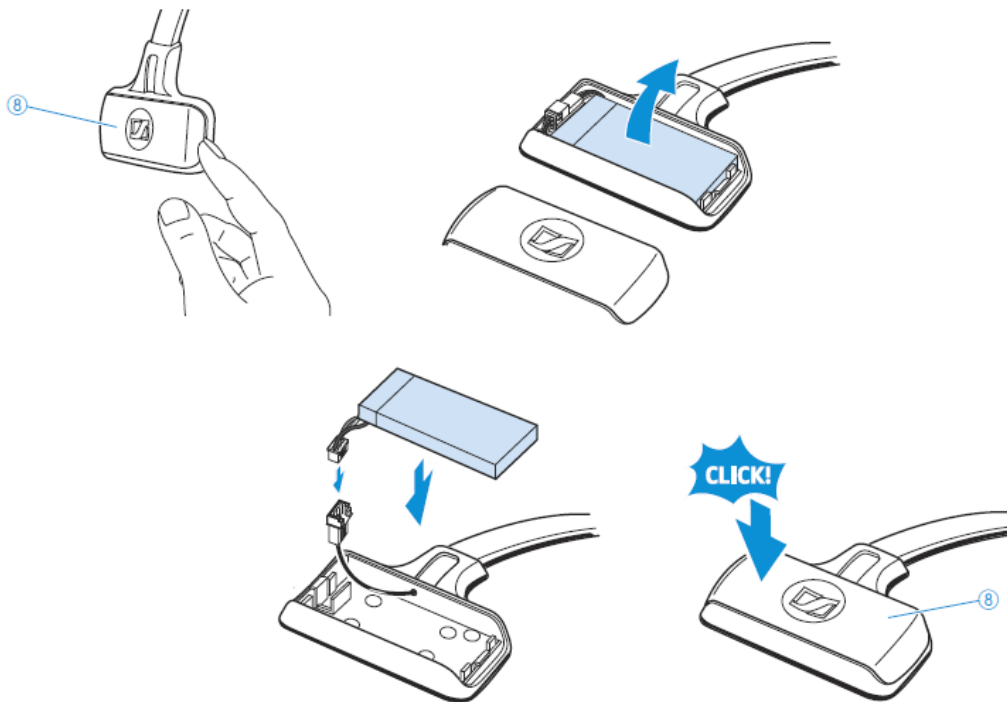
Open the battery compartment cover (8) using your fingernail.

Remove the rechargeable battery and carefully loosen the connector plug of the battery cable.

Insert the connector plug of the new rechargeable battery into the connection socket. Observe correct orientation of the connector plug.

Replace the battery compartment cover (8) onto the headset. The battery compartment cover (8) locks into place.

Charge the new rechargeable battery (see “charging the headset rechargeable battery” on page 22 of the [manual](#)).



## Pro2 Headset

Carefully remove the ear pad (9) from the ear cup where the battery compartment (8) is located.

Open the battery compartment cover (8) using your fingernail (see first diagram).

Remove the battery compartment cover (8).

Remove the rechargeable battery and carefully loosen the connector plug of the battery cable.

Insert the connector plug of the new rechargeable battery into the connection socket. Observe correct orientation of the connector plug.

Replace the battery compartment cover (8) onto the ear cup. The battery compartment cover (8) locks into place.

Reattach the ear pad to the ear cup by pressing firmly around the ear pad until you hear it lock into place.

Charge the new rechargeable battery (see “charging headset rechargeable battery” on page 22 of the [manual](#)).

