

Setting Your Preferred Audio Output/Playback

speakeasysolutions.com/blog/2011/12/16/setting-your-preferred-audio-output-playback

By Alexandria

December 16,
2011

If you have multiple audio devices connected to your computer (i.e. speakers, USB headset, handheld microphone, digital voice recorder etc.), you may feel that Microsoft Windows seems to randomly allocate the audio output.

And more often than not, the sound output is not in accordance with the device that you prefer.

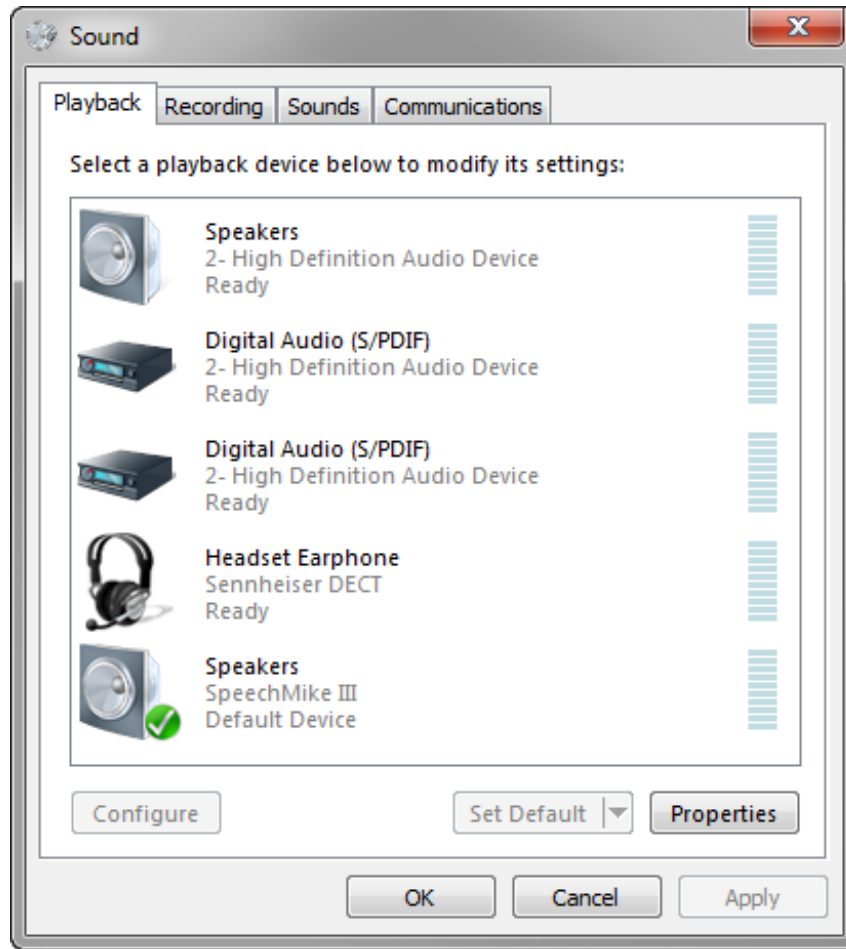


For example, you have Dragon installed on multiple computers and move your single Philips SpeechMike from computer to computer. You may find yourself frustrated that every time you plug the SpeechMike into your computer you note that the audio output/playback occurs through the SpeechMike rather than your speakers.

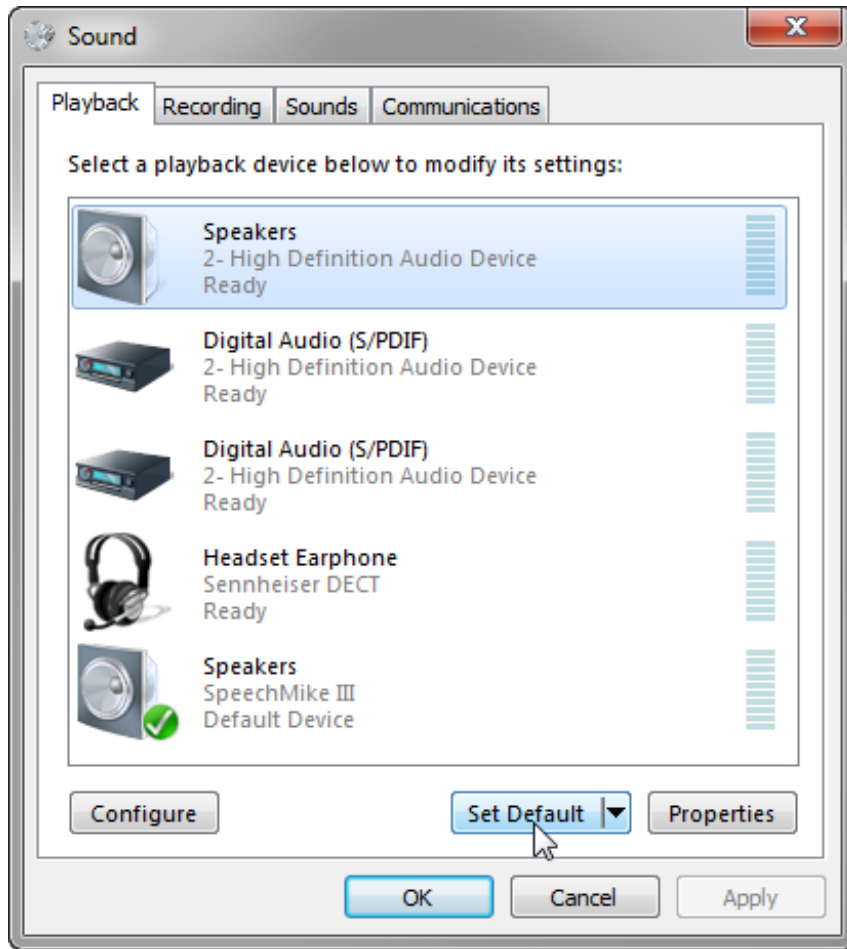
The fix is fairly simple and is as follows:

Set the default sound playback while all devices are connected to your computer.

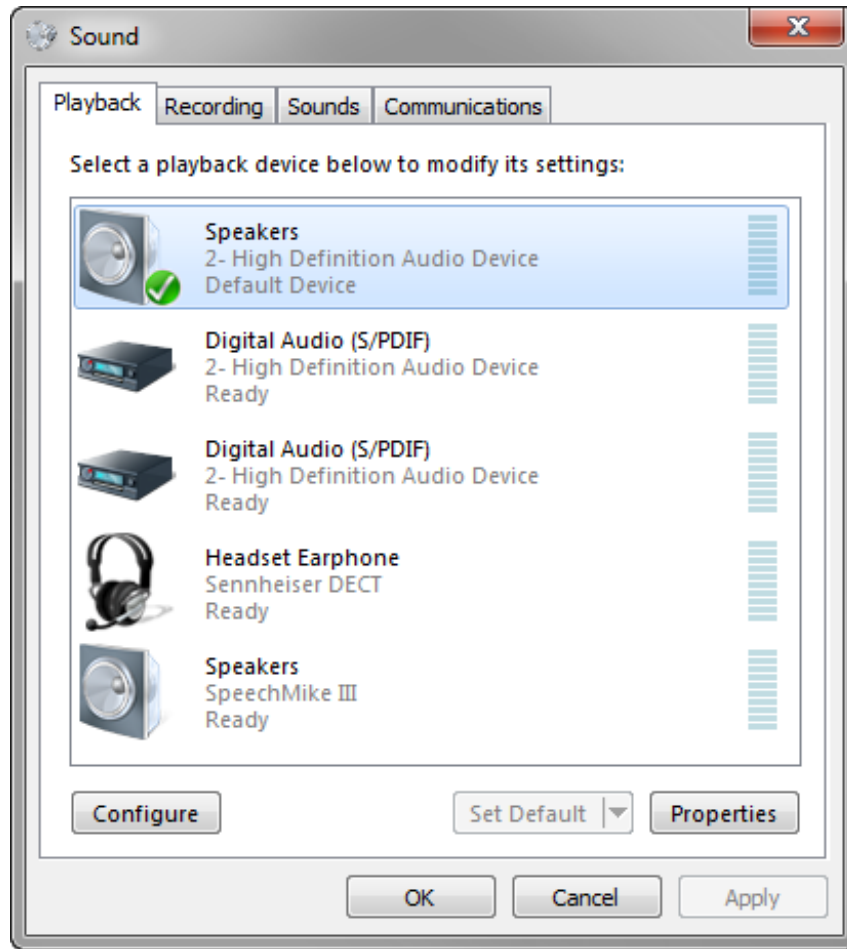
From within your **Control Panel**, open up the **sound** and audio device settings.



Under the **Playback** tab, click on the device that you would prefer the sound output to emanate from, and then click **Set Default**.



Click **Apply**, then **OK**.



And that is it.

You have now successfully set one device to always handle the sound playback regardless of the devices connected to your computer.