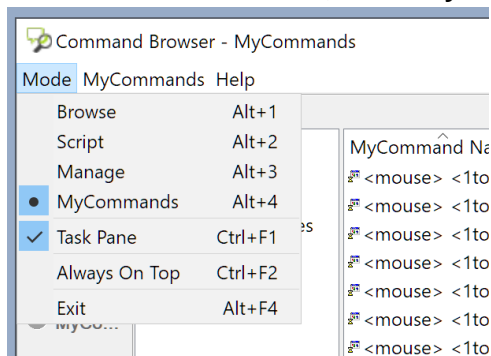


COVID-19 Content Pack for Dragon Medical Practice Edition

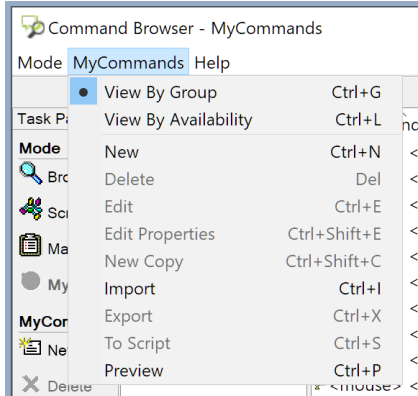
To assist customers addressing the COVID-19 pandemic, Nuance has built a **content pack** specific to COVID-19 to improve provider efficiency when using Dragon Medical to capture crucial data points for COVID-19 patients. The Nuance COVID-19 Content Pack needs to be imported into each individual Dragon Medical Practice Edition user profile.

Deployment instructions

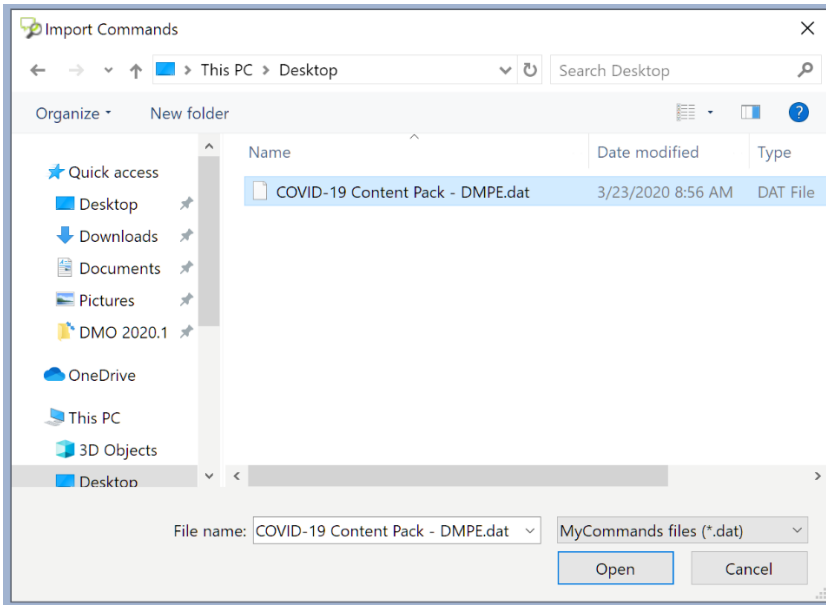
1. Download the [Nuance COVID-19 Content Pack DAT file](#).
2. Select **Tools** from the DragonBar.
3. Hover over Command Center. (Skip this step if using the Classic DragonBar)
4. Select **Command Browser**.
5. In the Command Browser, select **MyCommands** under the **Mode** menu.



6. Select **Import** under the **MyCommands** menu.



7. Browse to the location of the Content Pack DAT file, select it, and click the **Open** button.



8. On the next screen, click **Import**.

Once imported, the COVID-19 Auto-texts are available for use. In addition to deploying the COVID-19 Content Pack, we recommend customers add “COVID-19” to the Dragon Medical vocabulary using the [instructions for adding COVID-19 to the Dragon Medical Practice Edition vocabulary](#).

How to use the Content Pack:

- [How to use Auto-texts instructional video](#)
- [Nuance COVID-19 Content Pack for Dragon Medical instructional video](#) provides an overview of content and instructions for use.