



Release Announcement **Speech**Exec 11.5 SR1

June 2020 | SPS-T-2300/20010

SPEECH
PROCESSING
SOLUTIONS

CONTENTS

INTRODUCTION 3

 IMPROVED LICENSE TRANSFER MECHANISM 4

 NEW PROXY SETTING..... 4

 ASSIGNING A NEW PRODUCT KEY TO AN EXISTING SPEECHPROFILE 6

 UPDATE PERSONAL DATA IN SPEECHEXEC..... 8

 POCKETMEMO: ALLOW DOTS ". " IN KEYWORDS 8

 SUPPORT OF DRAGON MEDICAL PRACTICE EDITION 4.3 9

 BUGFIXES 9

Introduction

In February 2020 we have launched SpeechExec 11.5 with the new, flexible and future-proof licensing system. Based on the feedback we have received since then, we have slightly adapted some areas, and these improvements have resulted in the in the service release version SpeechExec 11.5 SR1, generating increased customer satisfaction.

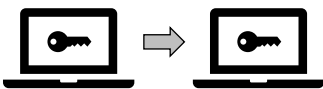
These are some of the new features:

- New **proxy setting** for the SpeechProfile registration process
- Improved **license transfer** mechanism
- Simplified **assignment of new product keys** to existing SpeechProfiles
- Support of **dots “.” in keywords** on the PocketMemo
- Support of **Dragon Medical Practice Edition 4.3**

This document is designed to give you a high-level overview of the enhancements in SpeechExec 11.5 SR1.

Improved license transfer mechanism

SpeechProfile enables users to seamlessly transfer their personalized SpeechExec license to different computers, e.g. if users want to use their SpeechExec license at home or in the office. In SpeechExec 11.5 SR1, we have optimized the license transfer process by removing the license transfer dialog.

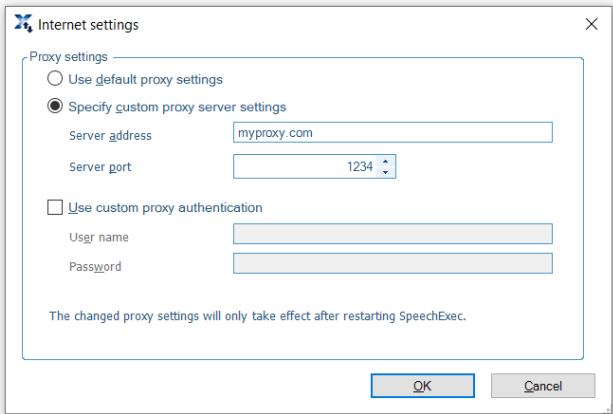
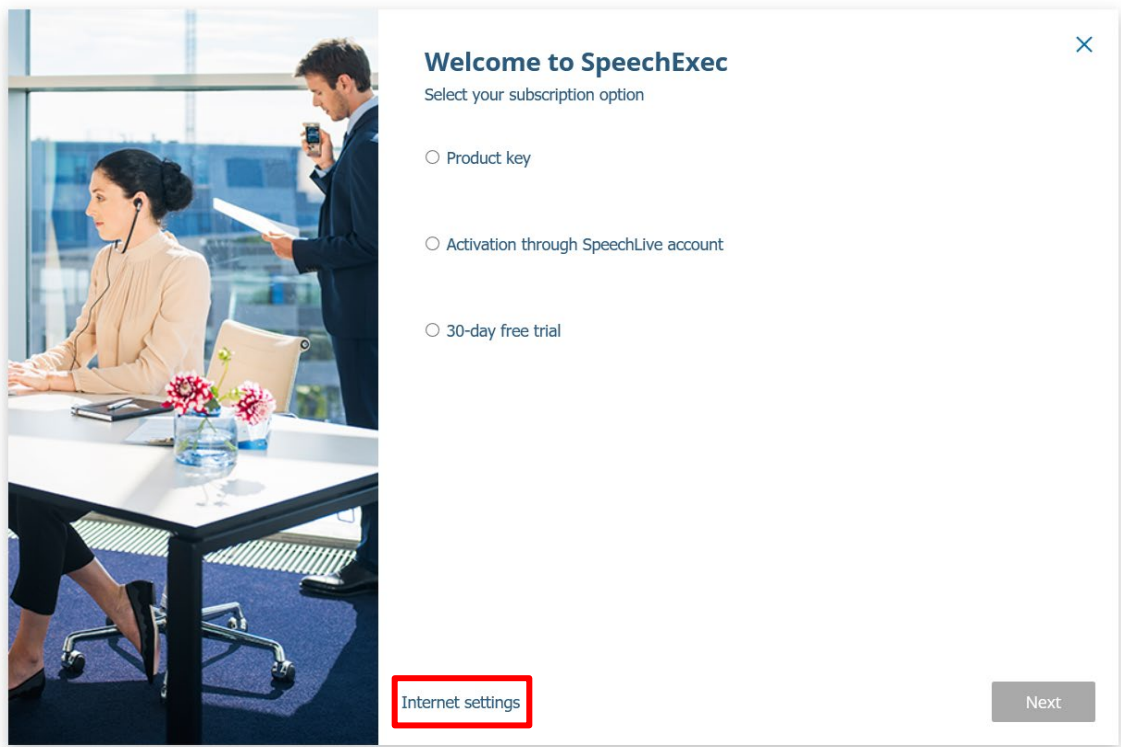


At the very first start of SpeechExec on a new computer, the user has to enter the product key, email address and password, this needs to be done **only once**. When launching SpeechExec the next time, the worklist will load immediately, no additional steps are required.

Note: it is only allowed to use a specific license on **one computer at-a-time**.

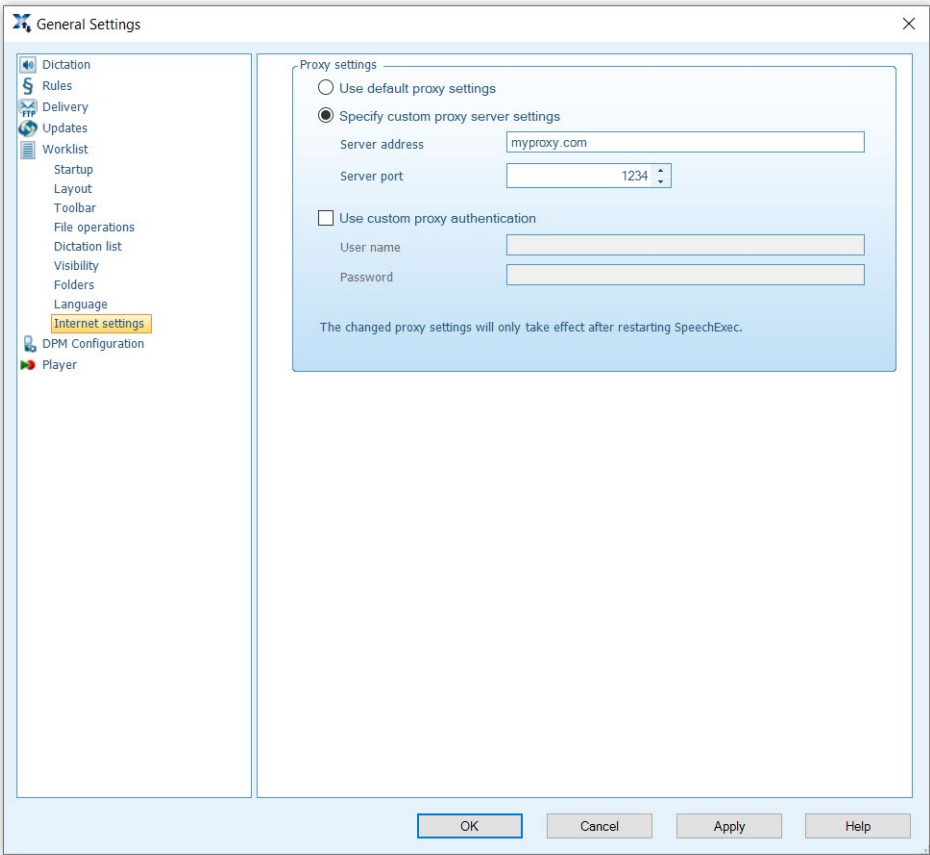
New proxy setting

For customers who work behind a proxy, it’s now possible to configure the proxy settings for the SpeechProfile registration process:




By default, SpeechExec is using the Windows proxy settings, therefore in most of the cases no manual proxy configuration is required.

Additionally, a new “Internet settings” node has been introduced in the “Worklist” tree of the SpeechExec settings to allow the proxy configuration for SpeechProfile, automatic software update and SpeechLive at a central place:



Assigning a new product key to an existing SpeechProfile

We have simplified the assignment of new product keys to existing SpeechProfiles. In the new version of SpeechExec, the user doesn't have to enter all the personal information again. The customer just enters the product key, logs in with the user credentials and confirms or updates the personal data:



Enter the product key

Enter the product key here (with hyphens):


PDCO-112-12AB-CD45-EFGH-IJKL-M6

Example: PDCO-11X-XXXX-XXXX-XXXX-XXXX-XX

Back

OK





Log in with SpeechProfile

Email address

herbert.maurer4@speech.com

Password

☐ Log in automatically when starting SpeechExec

Product key

PDCO-112-12AB-CD45-EFGH-IJKL-M6

Change product key...

Log in

Forgot password?

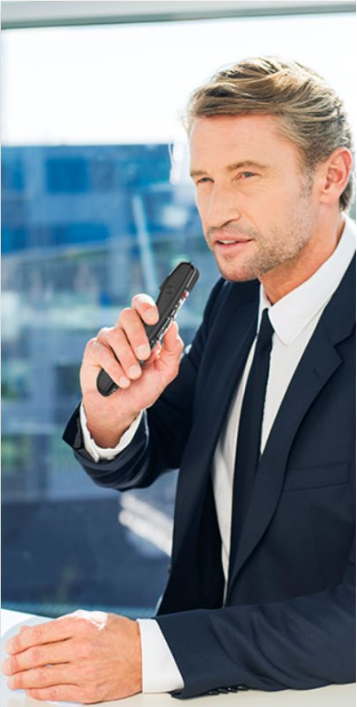
You do not have a SpeechProfile?

Register

Internet settings

Back to license selection

After clicking “Log in”, the following window opens:



Existing SpeechProfile found

×

A SpeechProfile already exists with the specified credentials.

Please choose one of the following options:

☒ Assign registration to existing SpeechProfile


Use this option to update the registration information of your existing SpeechProfile account.

☐ Specify new profile details

Use this option to register another SpeechProfile account with a different email address.

Next

Selecting “Assign registration to existing SpeechProfile”, opens the registration window, with all the personal information fields prefilled:



Register your license

×

Login details

Why register?

Email address *

herbert.maurer4@speech.com

Please enter a valid email address to receive an activation link.

Password *

.....

Retype Password *

.....

Personal information

First name *

Herbert

Last name *

Maurer

Company name *

Speech Processing Solutions

Industry *

Other

Job position *

Senior Management

Zip/Postal code *

1100

Telephone *

0660123456789

Country *

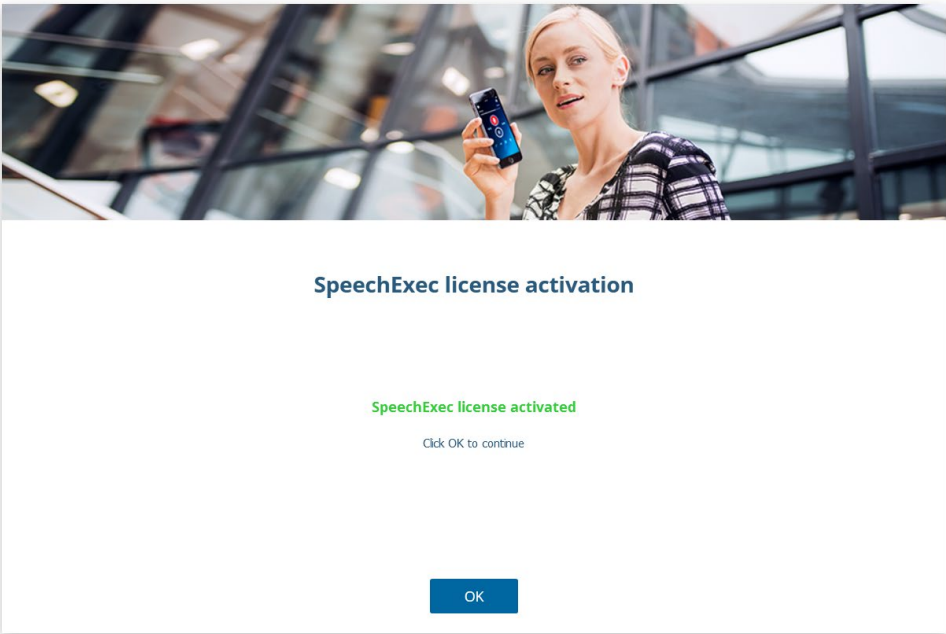
Austria

State/Province

Back to license selection

Next

If the data is still valid, the customer just clicks “Next” to assign the new product key to the SpeechProfile.



Update personal data in SpeechExec

The “Consent and Privacy” settings have been adapted. The SpeechProfile data can now be updated directly in SpeechExec:

Help

Contents and index...

System information...

License information...

Consent and Privacy...

Legal notice...

About...

Update Consent and Privacy

Update registration information

Privacy policy

Cancel

Register your license

Login details

Email address

herbert.maurer@speech.com

Personal information

First name *

Herbert

Last name *

Maurer

Company name *

Speech Processing Solutions

Industry *

Other

Job position *

Senior Management

Zip/Postal code *

1100

Telephone *

0660123456789

Country *

Austria

State/Province

Update

allow

PocketMemo:
dots "." in
keywords

SpeechExec now supports "." (dot) characters in keyword values for the PocketMemo 8000 series:

Recorder configuration - DPM 8000 (connected)				
Display Downloading Buttons Keywords	Displayed name:	Author	Work type	Comment
	Selectable values:	John.Doe	My.Memo	My.Comment
		Delivery		
		My.Delivery		

NOTE: the firmware version on the PocketMemo has to be 2.03 or higher.

Support of Dragon Medical Practice Edition 4.3

SpeechExec Pro 11.5 SR1 supports Dragon Medical Practice Edition 4.3

Please consider the following when upgrading from previous versions of Dragon Medical Practice Edition:

- **Local profile mode:** when using Dragon Medical Practice Edition with **local profiles**, after an upgrade to version 4.3, the Dragon profile gets moved to a new location when opening the profile in Dragon Medical Practice Edition for the first time. Therefore, please make sure that the correct path (and user profile) is selected in the SpeechExec speech recognition settings.

Old path: C:\ProgramData\Nuance\NaturallySpeaking15\Users\%profilename%\

New path: C:\Users\%username%\AppData\Local\Nuance\NS15\Users\%profilename%\

Note: the profile only gets moved when opening a profile in Dragon Medical Practice Edition. SpeechExec does **not** move any profiles.

- **Roaming profile mode:** when using Dragon Medical Practice Edition with roaming profiles, after an upgrade to version 4.3, please make sure that roaming mode is still enabled in Dragon Medical Practice Edition.

For more information see the Nuance release notes:

https://www.nuance.com/products/help/dragon/dmpe43/enx/dmpe/Content/ReleaseNotes/DMPE_relnotes.htm

Bugfixes

Jira ID	Description
SEPRO-397	Rename FTP setting
SEPRO-399	Pressing Enter key in 'Transfer license' window quits SpeechExec
SEPRO-406	EULA: updated sections (2a) and (2g)
SEPRO-407	Remove "Licensing" tab from SpeechExec Support Tool
SEPRO-408	New identification mechanism for licensing
SEPRO-412	Suspended dictation created on SE Pro Dictate cannot be converted to 16 bit/16khz/ mono